



2016

PRODUCT CATALOG

BLOWER COILS



[www.superiorrex.com](http://www.superiorrex.com)



## SBH / SBV Series Design Features

new product offering

BUILT TOUGH, BUILT TO LAST™ | www.superiorrex.com

### DESIGNED FOR MAXIMUM FLEXIBILITY

Both Horizontal and Vertical Belt Drive Blower Coils are designed to maximize flexibility of selection and installation.

The units will exceed the stringent quality standards of the institutional market, while remaining cost competitive in the light commercial segment of the market.

### COMPONENT OPTIONS

The extensive variety of standard options available on the SBH & SBV units are where you find the versatility to fit any HVAC system designer's needs.

Options include mixing boxes with standard low leak dampers, high efficiency filter sections for 2" prefilter and 4" final filter and blow-thru electric heat with single point power connection. All Electric Heat units are listed with ETL as an assembly and carry the cETL label.

High Efficiency motors, starters, disconnects and fusing mean easier coordination between mechanical and electrical trades.

All SBH and SBV belt drive blower coils have the option of foil faced insulation.

### COIL OPTIONS

Coil options allow for 4 or 6 row cooling coils. Water coils have optional circuiting that can be used to reduce Water Pressure Drop, which may also allow for pipe size reductions and lower material cost. Hot Water or Standard Steam coils may be placed in the Preheat or Reheat position.

### QUALITY PRODUCT

SBH and SBV belt drive blower coils are built from 18 gauge galvanized steel. This metal surpasses the ASTM 125 hour salt spray test for corrosion and rust. Standard insulation is 1 inch thick fiberglass, complying with UL 181 and NFPA 90A. All units, with or without Electric Heat, are cETL listed and labeled. All wiring is in compliance with NEC, assuring safety and quality for the owner.

### LOWER INSTALLED COST

All SBH or SBV belt drive blower coils are shipped completely assembled, reducing field installation time and labor. All units are thoroughly inspected and tested prior to shipment, eliminating potential problems at startup. Motor wiring is brought to a junction box on the outside of the unit casing, reducing electrical hook-up time. A wide variety of fan discharge configurations allow for increased flexibility and easier installation on the jobsite, resulting in cost reductions by eliminating expensive elbows, etc.

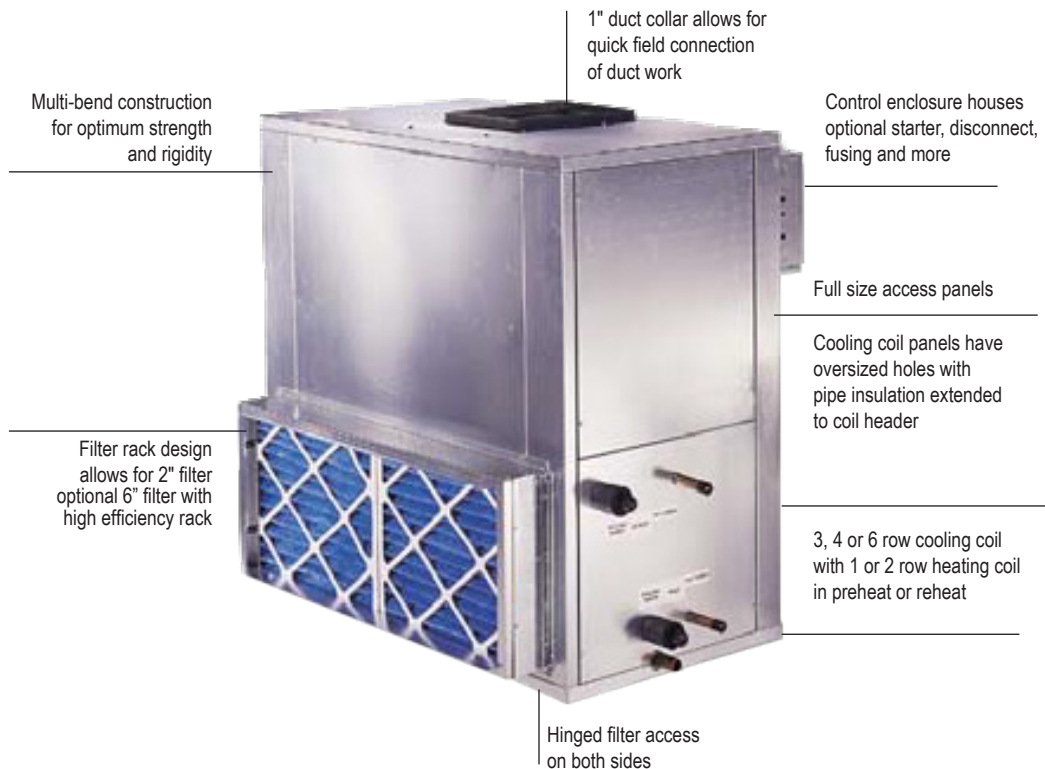
Construction Features

BUILT TOUGH, BUILT TO LAST™ | www.superiorrex.com

**MODEL SBH**



**MODEL SBV**



CONSTRUCTION FEATURES



### APPLICATION CONSIDERATIONS

Models SBH & SBV Belt Drive Blower Coils offer a wide range of application flexibility, while maintaining a simple, easy to install unit design. These units are intended to provide comfort cooling and heating within a small footprint. They may be applied in many types of building structures including schools, office buildings, hospitals, condominiums, assisted living facilities, apartments or stores. Applications can be constant or variable volume.

There are many applications the SBH & SBV product can be utilized. Some examples are listed below.

#### Constant volume applications:

- » Two-pipe hydronic system for cooling and/or heating
- » Two-pipe hydronic cooling system with electric heat
- » Four-pipe system with dedicated heating and cooling coils
- » Direct Expansion (DX) split systems with hydronic heat
- » Direct Expansion (DX) split systems with electric heat

#### Variable volume applications:

- » Two-pipe hydronic system for cooling and/or heating
- » Two-pipe hydronic cooling system with electric heat
- » Four-pipe system with dedicated heating and cooling coils

### ACOUSTICS

Control of noise within both occupied and unoccupied spaces has become increasingly important to designers and building owners/occupants. Proper consideration must be given to placement of indoor air conditioning units, particularly in the occupied space. Inherent flexibility of the fan and coil combination in the vertical configuration allows application in sound-sensitive areas. In such instances, a fan running at a low speed with a high capacity coil normally yields satisfactory results. It also may be desirable to select a larger nominal capacity unit and operate it at a less than nominal airflow for further acoustic benefit.

Three phase motors are recommended for sound-sensitive applications to avoid potential single phase motor hum. Unit operation in the stall region of the fan curve is not recommended since it may cause unsatisfactory noise levels and excessive unit vibration.

### INSTALLATION

These floor mounted or ceiling hung units can be installed with external vibration isolation on a base rail (SBH or SBV) or hanger rods (SBH only) at the corner points. This requires flex connections at the corner brackets, ductwork, electrical connections and piping connections. One of the most important and basic IAQ issues is condensate management. The first step to trouble-free operation is proper installation. It is very important that the unit be mounted high enough so that the condensate drain from the unit may be properly trapped. Please refer to the SBH & SBV IOM Manual at [www.superiorrex.com](http://www.superiorrex.com) for specifics on this issue. As with all HVAC systems, these units should be installed according to all applicable ASHRAE standards, SMACNA and local code requirements.

### OPERATING LIMITATIONS

Units must not be operated above maximum fan speed or unit airflow as listed in the Fan Performance section of this catalog. Unit operation at greater than maximum fan speed could drastically reduce bearing life and may result in a catastrophic wheel failure. Operating at greater than the maximum allowable airflow in the cooling mode may result in unsatisfactory operation due to moisture carry over from the coil. In addition, it is often not economical to operate a unit at its maximum fan speed due to the greater motor power requirements.

Units with electric heat should not be operated with leaving air temperature greater than 104°F (40°C), to prevent excessive leaving air temperatures and electric heat limit trips. A hydronic (or steam) coil and electric heat should not be operated simultaneously to prevent excessive leaving air temperatures and limit trips. Electric heat units are equipped with a high limit lockout switch that disables the electric heater if the temperature of the hydronic coil is greater than 104°F (40°C).

Water coils must not be operated above a fluid velocity of 8 ft./sec. to reduce the possibility of velocity induced erosion and flow noise. Water coils must not be operated below a fluid velocity of 1 ft./sec. to prevent degraded coil performance caused by laminar flow. These high or low fluid flow rates may not be included in the AHRI coil certification.

## Horizontal & Vertical Belt Drives

### SBH

- » Mixing boxes with standard low-leak dampers, high-efficiency filter sections for 2" prefilter and 4" final filter
- » Fiberglass-insulated cabinets, main incoming-power disconnect (non-fused), fusing (main), magnetic contractors, and fan control package with heater interlock contacts
- » Blow-through electric heat with single-point power connection
- » Meets all N.E.C. requirements and is cETL listed in compliance with UL/ANSI Std. 1995
- » Hot water, chilled water and direct expansion coils, steam, cold water/hot water changeover available for all models
- » 800 - 4000 cfm nominal airflows



SBH

BUILT TOUGH, BUILT TO LAST™ | www.superiorrex.com

#### AVAILABLE MODEL:

SBH

#### OVERVIEW

Superior Rex horizontal belt drive blower coils offer a wide range of application flexibility, while maintaining a simple, easy to install unit design. These units are intended to provide comfort cooling and heating within a small footprint. They may be applied in many types of building structures including schools, office buildings, hospitals, condominiums, assisted living facilities, apartments and stores. Applications can be constant or variable volume.

#### OPTIONAL FEATURES INCLUDE:

##### Construction

- » IAQ (sloped) stainless steel drain pan with 1" MPT galvanized pipe outlet
- » Galvanized steel drain pan
- » External rubber-in-shear or spring type vibration isolators, hangers or floor mount
- » Fan discharge arrangements
- » Scrim reinforced foil faced insulation
- » Hinged access panels with lift and turn fasteners
- » Base rails with rigging slots factory assembled and installed
- » Auxiliary (secondary) drain connections

##### Fan Motor and Drive

- » High efficiency motors
- » TEFC motors



See website for Specifications

##### Coils

- » 3, 4 and 6 row chilled water or DX coils
- » 1 and 2 row hot water or standard steam coils
- » Heating coil in preheat or reheat position
- » Coil connections opposite handing
- » Stainless steel coil casings
- » Automatic air vents on water coils
- » Heat pump compatible cooling coils
- » 0.025" tube wall thickness

##### Filters

- » 2" pleated filter
- » Spare throwaway or pleated filters
- » High efficiency filter rack with 2" and 4" filters

##### Inlet Damper Section

- » Factory assembled and installed
- » Heavy gauge galvanized steel formed blade dampers
- » Low leak dampers with extruded vinyl blade seals and flexible metal jamb seals
- » Parallel blade operation
- » Interconnecting damper linkage



A Participating Corporation in the  
AHRI 430 Certification Program



### Electrical

- » Motor wiring on conduit
- » Motor starter (contactor with overload for three phase; contactor for single phase), factory installed (mounted and wired)
- » Door interlocking disconnect switch (non-fused)
- » Hand off auto switch (HOA)
- » Main fusing

### Electric Heat Section

- » Factory mounted electric heater with single point power connection, cETL listed as an assembly

**SBV**

- » Mixing boxes with standard low-leak dampers, high-efficiency filter sections for 2" prefilter and 4" final filter
- » Fiberglass-insulated cabinets, main incoming-power disconnect (non-fused), fusing (main), magnetic contractors, and fan control package with heater interlock contacts
- » Blow-through electric heat with single-point power connection
- » Meets all N.E.C. requirements and is cETL listed in compliance with UL/ANSI Std. 1995
- » Hot water, chilled water and direct expansion coils, steam, cold water/hot water changeover available for all models
- » 800 - 4000 cfm nominal airflows



SBV

BUILT TOUGH, BUILT TO LAST™ | www.superiorrex.com

**AVAILABLE MODEL:**

SBV

**OVERVIEW**

Superior Rex horizontal belt drive blower coils offer a wide range of application flexibility, while maintaining a simple, easy to install unit design. These units are intended to provide comfort cooling and heating within a small footprint. They may be applied in many types of building structures including schools, office buildings, hospitals, condominiums, assisted living facilities, apartments and stores. Applications can be constant or variable volume.

**OPTIONAL FEATURES INCLUDE:**

**Construction**

- » IAQ (sloped) stainless steel drain pan with 1" MPT galvanized pipe outlet
- » Galvanized steel drain pan
- » External rubber-in-shear or spring type vibration isolators, hangers or floor mount
- » Fan discharge arrangements
- » Scrim reinforced foil faced insulation
- » Hinged access panels with lift and turn fasteners
- » Base rails with rigging slots factory assembled and installed
- » Auxiliary (secondary) drain connections

**Fan Motor and Drive**

- » High efficiency motors
- » TEFC motors



See website for Specifications

**Coils**

- » 3, 4 and 6 row chilled water or DX coils
- » 1 and 2 row hot water or standard steam coils
- » Heating coil in preheat or reheat position
- » Coil connections opposite handing
- » Stainless steel coil casings
- » Automatic air vents on water coils
- » Heat pump compatible cooling coils
- » 0.025" tube wall thickness

**Filters**

- » 2" pleated filter
- » Spare throwaway or pleated filters
- » High efficiency filter rack with 2" and 4" filters

**Inlet Damper Section**

- » Factory assembled and installed
- » Heavy gauge galvanized steel formed blade dampers
- » Low leak dampers with extruded vinyl blade seals and flexible metal jamb seals
- » Parallel blade operation
- » Interconnecting damper linkage



A Participating Corporation in the AHRI 430 Certification Program



### Electrical

- » Motor wiring on conduit
- » Motor starter (contactor with overload for three phase; contactor for single phase), factory installed (mounted and wired)
- » Door interlocking disconnect switch (non-fused)
- » Hand off auto switch (HOA)
- » Main fusing

### Electric Heat Section

- » Factory mounted electric heater with single point power connection, cETL listed as an assembly

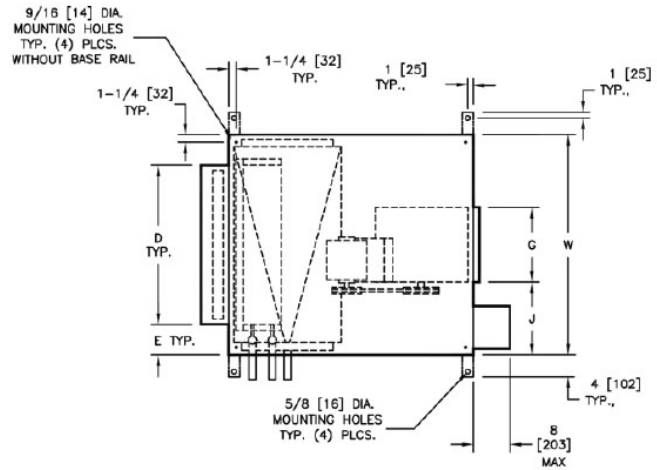


Dimensions

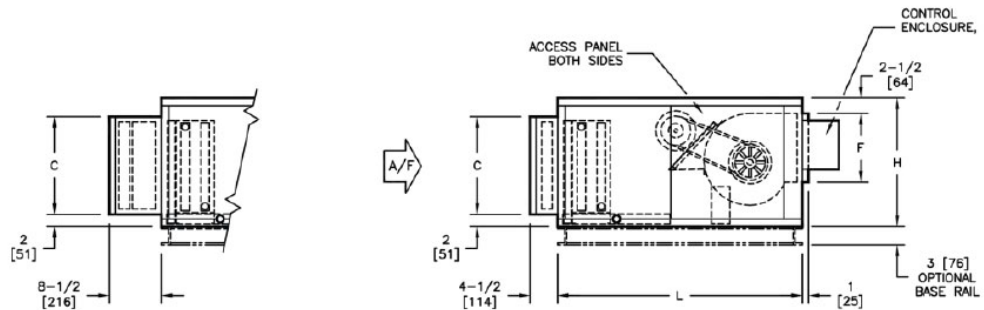
SBH UNIT DIMENSIONS / DISCHARGE ARRANGEMENT 2

Notes:

1. All dimensions are inches [millimeters]. All dimensions are  $\pm 1/4"$  [6mm]. Metric values are soft conversion.
2. Right hand unit shown, left hand unit opposite. Motor/drive location may be specified Left or Right Hand. Standard control enclosure location matches motor/drive position.
3. Provide sufficient clearance to permit access to controls and comply with applicable codes and ordinances
4. Flat filter rack may be located at unit inlet as required. See drawing for filter rack details.
5. Base rail is optional on the base unit. See drawing. Base rails must be used with mixing box.
6. See coil connection detail drawings for coil connection sizes and locations



Top View



High Efficiency Filter Rack

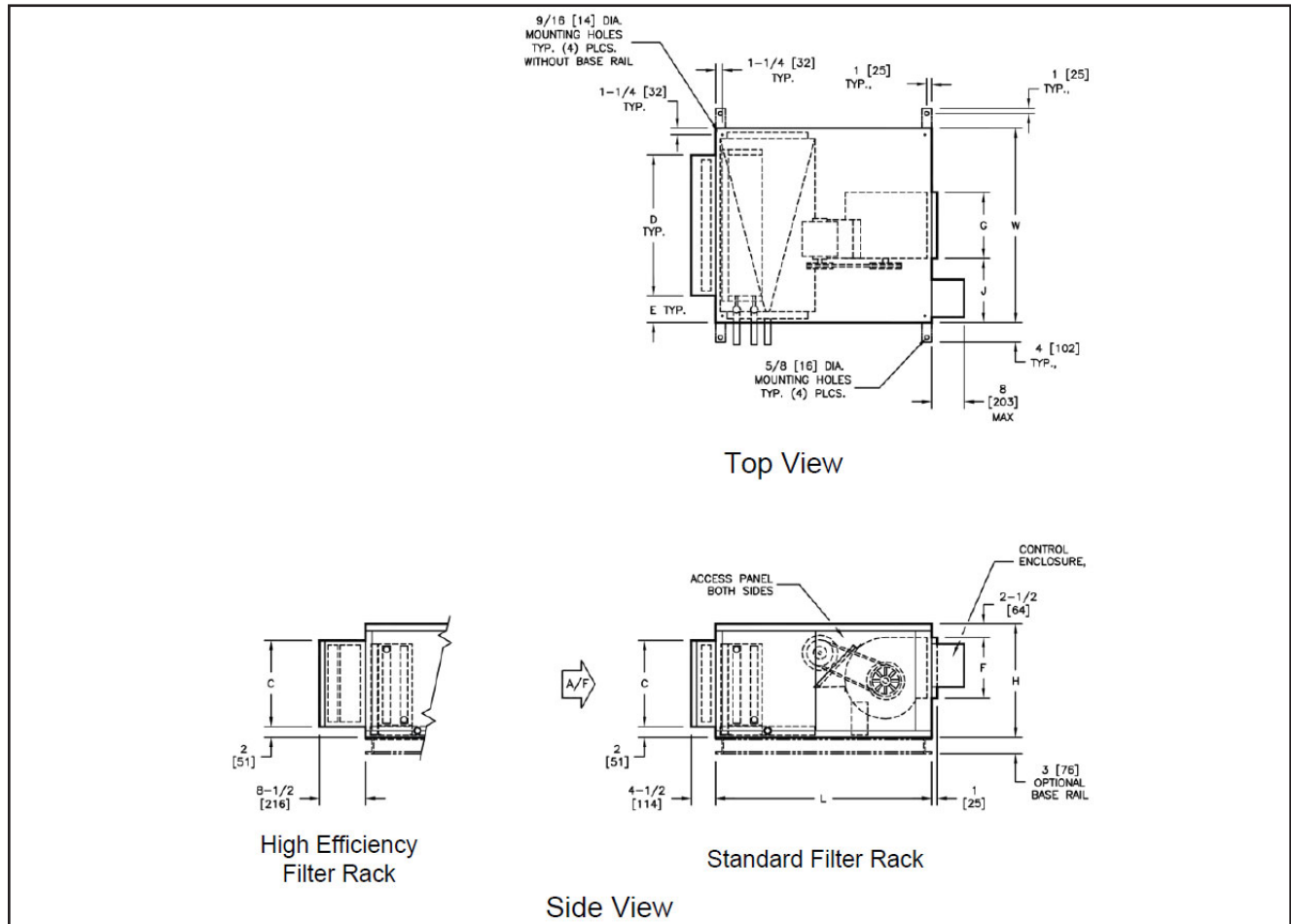
Standard Filter Rack

Side View

| Dimensions |                        |          |           |           |          |               |             |              |              |               |
|------------|------------------------|----------|-----------|-----------|----------|---------------|-------------|--------------|--------------|---------------|
| Unit Size  | Fan Size               | L        | W         | H         | C        | D             | E           | F            | G            | J             |
| 08         | 9 x 4<br>[229 x 102]   | 24 [610] | 30 [762]  | 44 [1118] | 16 [406] | 20 [508]      | 5 [127]     | 10 1/4 [260] | 6 7/8 [175]  | 11 9/16 [294] |
| 12         | 9 x 6<br>[229 x 152]   | 24 [610] | 36 [914]  | 44 [1118] | 16 [406] | 25 [635]      | 5 1/2 [140] | 11 1/4 [286] | 8 1/4 [210]  | 13 7/8 [352]  |
| 16         | 10 x 8<br>[254 x 203]  | 24 [610] | 44 [1118] | 44 [1118] | 16 [406] | 39 1/2 [1003] | 2 1/4 [57]  | 13 1/2 [343] | 10 1/4 [260] | 16 7/8 [429]  |
| 20         | 10 x 10<br>[254 x 524] | 30 [762] | 50 [1270] | 50 [1270] | 16 [406] | 44 1/2 [1130] | 2 3/4 [70]  | 13 1/2 [343] | 13 1/4 [337] | 18 3/8 [467]  |
| 30         | 15 x 9<br>[381 x 229]  | 30 [762] | 59 [1499] | 56 [1422] | 25 [635] | 51 [1295]     | 4 [102]     | 16 [406]     | 13 1/4 [337] | 22 7/8 [581]  |
| 40         | 15 x 11<br>[381 x 279] | 30 [762] | 68 [1727] | 59 [1499] | 25 [635] | 59 [1499]     | 4 1/2 [114] | 16 [406]     | 15 [381]     | 26 1/2 [673]  |



SBH UNIT DIMENSIONS / DISCHARGE ARRANGEMENT 3



Notes:

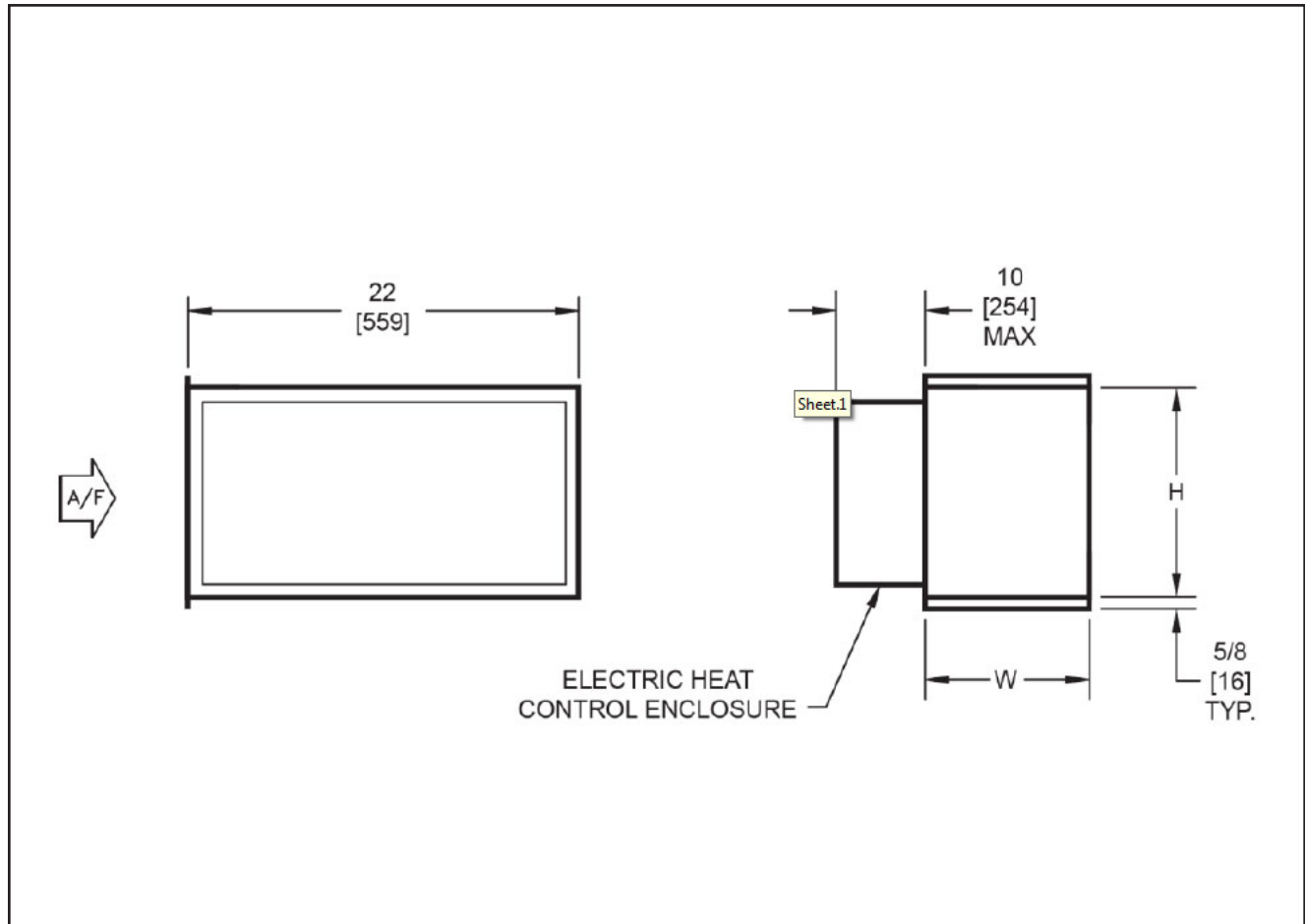
1. All dimensions are inches [millimeters]. All dimensions are  $\pm 1/4"$  [6mm]. Metric values are soft conversion.
2. Damper drive rods are internal, located on both sides of unit
3. Mixing box includes space for standard flat filter rack
4. Base rails are including with mixing box

| Dimensions |                        |           |           |          |          |               |             |              |              |               |
|------------|------------------------|-----------|-----------|----------|----------|---------------|-------------|--------------|--------------|---------------|
| Unit Size  | Fan Size               | L         | W         | H        | C        | D             | E           | F            | G            | J             |
| 08         | 9 x 4<br>[229 x 102]   | 40 [1016] | 30 [762]  | 21 [533] | 16 [406] | 20 [508]      | 5 [127]     | 10 1/4 [260] | 6 7/8 [175]  | 11 9/16 [294] |
| 12         | 9 x 6<br>[229 x 152]   | 40 [1016] | 36 [914]  | 21 [533] | 16 [406] | 25 [635]      | 5 1/2 [140] | 11 1/4 [286] | 8 1/4 [210]  | 13 7/8 [352]  |
| 16         | 10 x 8<br>[254 x 203]  | 40 [1016] | 44 [1118] | 21 [533] | 16 [406] | 39 1/2 [1003] | 2 1/4 [57]  | 11 3/8 [289] | 10 1/4 [260] | 16 7/8 [429]  |
| 20         | 10 x 10<br>[254 x 524] | 40 [1016] | 50 [1270] | 21 [533] | 16 [406] | 44 1/2 [1130] | 2 3/4 [70]  | 11 3/8 [289] | 13 1/4 [337] | 18 3/8 [467]  |
| 30         | 15 x 9<br>[381 x 229]  | 46 [1168] | 59 [1499] | 30 [762] | 25 [635] | 51 [1295]     | 4 [102]     | 16 [406]     | 13 1/4 [337] | 22 7/8 [581]  |
| 40         | 15 x 11<br>[381 x 279] | 46 [1168] | 68 [1727] | 30 [762] | 25 [635] | 59 [1499]     | 4 1/2 [114] | 16 [406]     | 15 [381]     | 26 1/2 [673]  |

All dimensions are in inches

Dimensions

SBH / SBV, BLOW-THRU ELECTRIC HEAT



**Notes:**

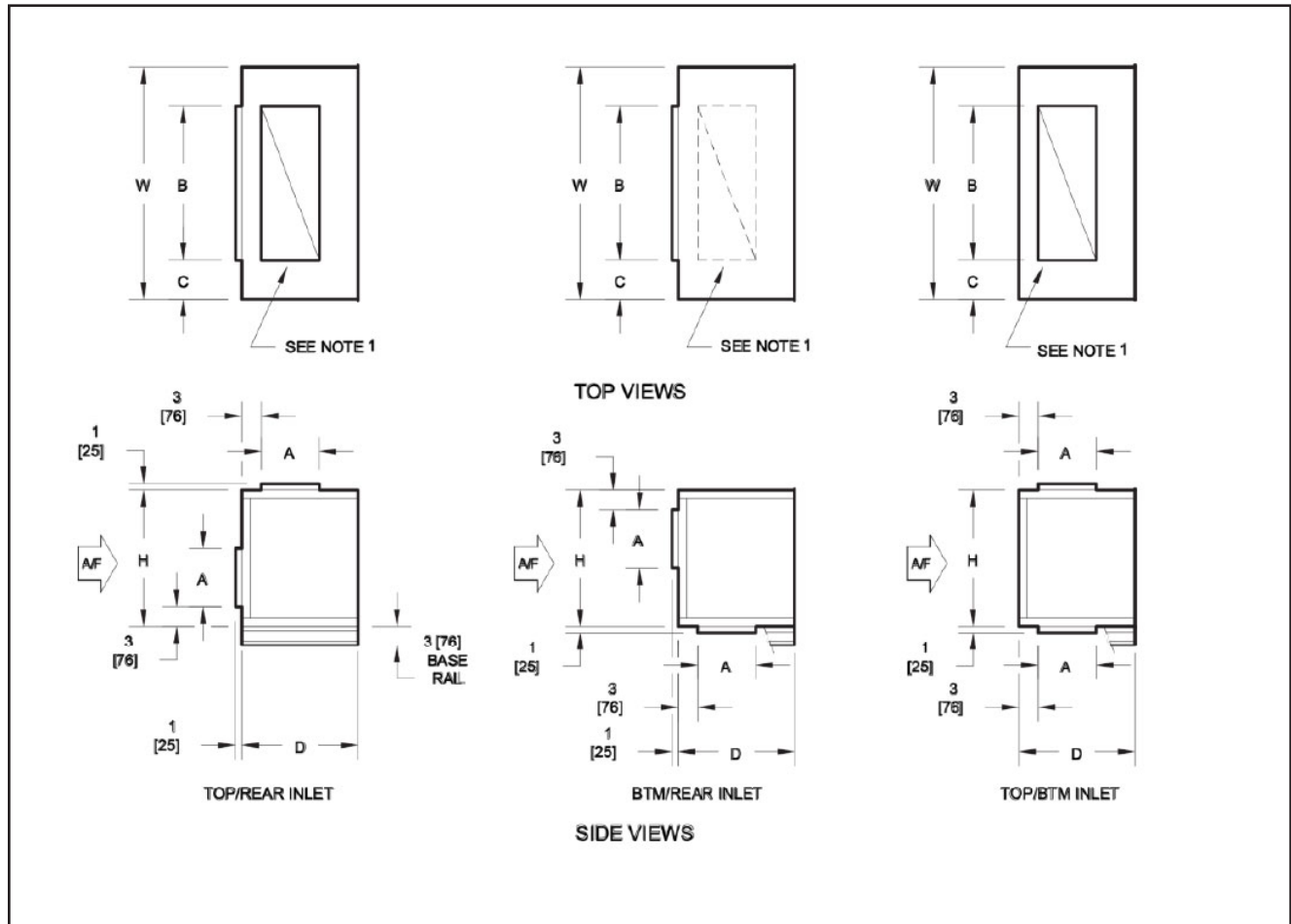
1. All dimensions are inches [millimeters]. All dimensions are  $\pm 1/4$ " [6mm]. Metric values are soft conversion.
2. Motor/drive location may be specified Left or Right Hand. Standard control enclosure location matches motor/drive position
3. Provide sufficient clearance to permit access to controls and comply with applicable codes and ordinances
4. Available for horizontal discharge only

**BLOW-THRU ELECTRIC HEAT SECTION**

| Unit Size | H                                    | W                                    | Weight lbs [kg] |
|-----------|--------------------------------------|--------------------------------------|-----------------|
| 08        | 11 <sup>7</sup> / <sub>8</sub> [302] | 8 <sup>7</sup> / <sub>8</sub> [225]  | 42 [19]         |
| 12        | 11 <sup>7</sup> / <sub>8</sub> [302] | 8 <sup>7</sup> / <sub>8</sub> [225]  | 42 [19]         |
| 16        | 12 [305]                             | 10 <sup>7</sup> / <sub>8</sub> [278] | 42 [19]         |
| 20        | 12 [305]                             | 13 <sup>7</sup> / <sub>8</sub> [352] | 50 [23]         |
| 30        | 16 <sup>5</sup> / <sub>8</sub> [422] | 13 <sup>7</sup> / <sub>8</sub> [352] | 55 [25]         |
| 40        | 16 <sup>5</sup> / <sub>8</sub> [422] | 15 <sup>7</sup> / <sub>8</sub> [397] | 55 [25]         |



SBH / SBV STANDARD MIXING BOX



Notes:

1. All dimensions are inches [millimeters]. All dimensions are  $\pm 1/4$ " [6mm]. Metric values are soft conversion.
2. Damper drive rods are internal, located on both sides of unit
3. Mixing box includes space for standard flat filter rack
4. Base rails are including with mixing box

| Dimensions |          |           |          |           |          |          |
|------------|----------|-----------|----------|-----------|----------|----------|
| Unit Size  | H        | W         | A        | B         | C        | D        |
| 08         | 21 [533] | 30 [762]  | 9 [229]  | 18 [457]  | 6 [152]  | 18 [457] |
| 12         | 21 [533] | 36 [914]  | 9 [229]  | 24 [610]  | 6 [152]  | 18 [457] |
| 16         | 21 [533] | 44 [1118] | 9 [229]  | 30 [762]  | 7 [178]  | 18 [457] |
| 20         | 21 [533] | 50 [1270] | 12 [305] | 36 [914]  | 7 [178]  | 21 [533] |
| 30         | 30 [762] | 59 [1499] | 12 [305] | 45 [1143] | 7 [178]  | 21 [533] |
| 40         | 30 [762] | 68 [1727] | 15 [381] | 48 [1219] | 10 [254] | 24 [610] |

Performance Data

Coil and Filter Data

COIL AND FILTER DATA

| Unit Size | Coil Face Area | 2" Flat Filters<br>(Quantity) and Size                               | Filter Face Area |
|-----------|----------------|--|------------------|
| 08        | 2.1 [0.20]     | (1) 16 x 20 x 2 [406 x 508 x 51]                                     | 2.2 [0.20]       |
| 12        | 2.7 [0.25]     | (1) 16 x 25 x 2 [406 x 635 x 51]                                     | 2.8 [0.26]       |
| 16        | 3.5 [0.33]     | (2) 16 x 20 x 2 [406 x 508 x 51]                                     | 4.4 [0.41]       |
| 20        | 4.9 [0.46]     | (1) 16 x 20 x 2 [406 x 508 x 51]<br>(1) 16 x 25 x 2 [406 x 635 x 51] | 5.0 [0.46]       |
| 30        | 6.5 [0.60]     | (2) 16 x 25 x 2 [406 x 635 x 51]<br>(1) 20 x 25 x 2 [508 x 635 x 51] | 9.0 [0.84]       |
| 40        | 8.4 [0.78]     | (3) 20 x 25 x 2 [508 x 635 x 51]                                     | 10.4 [0.97]      |

Notes:

1. Standard filters are 2" throwaway
2. Filter sizes are nominal and standard size, measured in inches [millimeters]
3. Coil and filter face areas are measured in square feet [square meters]
4. Cooling and heating coils have same face area

NOMINAL COIL CONNECTION SIZES

| Unit Size | Coil Type  |            |            |            |            |            |            |            |            |             |            |          |            |          |            |
|-----------|------------|------------|------------|------------|------------|------------|------------|------------|------------|-------------|------------|----------|------------|----------|------------|
|           | Water      |            |            |            |            | Steam      |            |            |            | Refrigerant |            |          |            |          |            |
|           | 1 Row      | 2 Row      | 3 Row      | 4 Row      | 6 Row      | 1 Row      |            | 2 Row      |            | 3 Row       |            | 4 Row    |            | 6 Row    |            |
|           |            |            |            |            |            | STM.       | COND.      | STM.       | COND.      | Liquid      | Suction    | Liquid   | Suction    | Liquid   | Suction    |
| 08        | 5/8 [16]   | 5/8 [16]   | 7/8 [22]   | 7/8 [22]   | 7/8 [22]   | 1 1/8 [29] | 7/8 [22]   | 1 1/8 [29] | 7/8 [22]   | 5/8 [16]    | 5/8 [16]   | 5/8 [16] | 5/8 [16]   | 5/8 [16] | 5/8 [16]   |
| 12        | 5/8 [16]   | 5/8 [16]   | 7/8 [22]   | 7/8 [22]   | 7/8 [22]   | 1 1/8 [29] | 7/8 [22]   | 1 1/8 [29] | 7/8 [22]   | 5/8 [16]    | 7/8 [22]   | 5/8 [16] | 7/8 [22]   | 5/8 [16] | 7/8 [22]   |
| 16        | 5/8 [16]   | 7/8 [22]   | 7/8 [22]   | 7/8 [22]   | 1 1/8 [29] | 1 1/8 [29] | 7/8 [22]   | 1 3/8 [35] | 1 1/8 [29] | 5/8 [16]    | 7/8 [22]   | 5/8 [16] | 7/8 [22]   | 5/8 [16] | 7/8 [22]   |
| 20        | 5/8 [16]   | 7/8 [22]   | 1 1/8 [29] | 1 1/8 [29] | 1 1/8 [29] | 1 3/8 [35] | 1 1/8 [29] | 1 3/8 [35] | 1 1/8 [29] | 5/8 [16]    | 7/8 [22]   | 5/8 [16] | 7/8 [22]   | 5/8 [16] | 7/8 [22]   |
| 30        | 7/8 [22]   | 1 1/8 [29] | 1 1/8 [29] | 1 1/8 [29] | 1 3/8 [35] | 1 5/8 [41] | 1 1/8 [29] | 1 5/8 [41] | 1 1/8 [29] | 5/8 [16]    | 1 1/8 [29] | 5/8 [16] | 1 1/8 [29] | 5/8 [16] | 1 1/8 [29] |
| 40        | 1 1/8 [29] | 1 3/8 [35] | 1 3/8 [35] | 1 3/8 [35] | 1 5/8 [41] | 2 1/8 [54] | 1 3/8 [35] | 2 1/8 [54] | 1 3/8 [35] | 5/8 [16]    | 1 1/8 [29] | 5/8 [16] | 1 1/8 [29] | 7/8 [22] | 1 3/8 [35] |

Notes:

1. Water coils are based on Standard GPM Circuiting. Consult Superior Rex Representative for applications requiring special circuiting.
2. For other selections, refer to RAMP
3. Refrigerant coil connection sizes for single circuit coils and may vary with application. Contact Superior Rex for double circuit coils.
4. All dimensional data is outside diameter (O.D.), measured in inches [millimeters]



## COILS AND STATIC PRESSURE DATA

### COILS

Superior Rex manufactures hot water, chilled water and direct expansion (DX) coils for specific application with all Model SBH and SBV blower coils. AHRI 410 certified and labeled, and strict on-site inspection

before, during, and after installation guarantees the highest quality and performance available.

#### Standard Features

- » Designed, manufactured and tested by Superior Rex
- » AHRI 410 certified and labeled
- » ½" O.D. seamless copper tubes
- » High efficiency aluminum fin surface for optimizing heat transfer, pressure drop and carryover
- » Mechanically expanded copper tubes leak tested to a minimum 450 PSIG air pressure under water
- » Manual air vent plug on all water coils
- » Copper ODM sweat connections
- » 300 PSIG working pressure at 200°F
- » Evaporator coils are factory sealed and charged with a minimum of 5 PSIG nitrogen or refrigerated dry air
- » Steam coils rated at 15 PSIG maximum operating pressure at about 35°F
- » 0.016" tube wall thickness (0.025" on steam)

#### Optional Features

- » Stainless steel coil casings
- » Automatic air vents on water coils
- » Heat pump compatible cooling coils
- » 0.025" tube wall thickness



## COMPONENT STATIC PRESSURE LOSS – INCHES W.G.

| Unit Size | Nominal CFM | Cabinet | Filter (2" T/A) | Coil  |       |       |       |       | Inlet Damper Section | Electric Heat Section |
|-----------|-------------|---------|-----------------|-------|-------|-------|-------|-------|----------------------|-----------------------|
|           |             |         |                 | 1 Row | 2 Row | 3 Row | 4 Row | 6 Row |                      |                       |
| 08        | 800         | 0.09    | 0.25            | 0.05  | 0.10  | 0.23  | 0.31  | 0.47  | 0.04                 | 0.05                  |
| 12        | 1200        | 0.09    | 0.25            | 0.06  | 0.12  | 0.29  | 0.39  | 0.58  | 0.06                 | 0.05                  |
| 16        | 1600        | 0.10    | 0.25            | 0.06  | 0.13  | 0.30  | 0.40  | 0.60  | 0.09                 | 0.05                  |
| 20        | 2000        | 0.11    | 0.25            | 0.06  | 0.11  | 0.26  | 0.35  | 0.52  | 0.05                 | 0.05                  |
| 30        | 3000        | 0.14    | 0.25            | 0.07  | 0.13  | 0.31  | 0.41  | 0.61  | 0.08                 | 0.05                  |
| 40        | 4000        | 0.16    | 0.25            | 0.07  | 0.14  | 0.32  | 0.43  | 0.64  | 0.07                 | 0.05                  |

#### Notes:

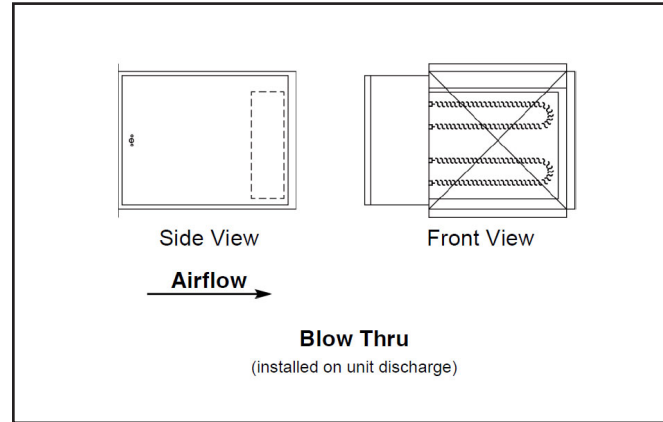
1. All static pressures are at nominal CFM
2. Coil static pressure for standard coil, 10FPI at 80/67 EAT and 45° EWT with 10° rise
3. For 8, 12 or 14 FPI, refer to RAMP
4. Filter static pressure based on 50% loaded filter
5. If pleated filters are used in lieu of throwaway, the filter static pressure loss is 0.35

Performance Data

Electric Heat

Standard Features

- » Flanged construction for direct unit mounting, in blow-thru configuration
- » Listed for zero clearance installation
- » Meets National Electrical Code requirements
- » Ni-Chrome wire in ceramic insulators
- » Stainless steel element terminals and hardware
- » Element support brackets on maximum 3 1/2" centers
- » Solid cover with continuous full height hinge
- » Overtemperature protection
- » All internal wiring rated for 105°C minimum
- » Airflow switch
- » Incoming line power distribution block
- » cETL Listed in compliance with UL/ANSI Standard 1995
- » Single point power connection
- » Heater factory mounted to unit with cETL listing as an assembly



Optional Features

- » Main incoming power disconnect (non-fused)
- » Fusing (main)
- » Magnetic contactors wired for disconnecting operation
- » Fan control package with heater interlock contacts (required for single point power connection)

Electrical Calculations Information

1. Contact your local Superior Rex sales office
2. Non-Fused Door Interlock Disconnect Switch shall be sized according to MCA
3. Main Fusing shall be sized according to MOP

| Heater AMP Calculation |             |
|------------------------|-------------|
| Voltage                | AMPs per kW |
| 115/1                  | 8.70        |
| 208/1                  | 4.81        |
| 230/1                  | 4.35        |
| 277/1                  | 3.61        |
| 208/3                  | 2.78        |
| 230/3                  | 2.51        |
| 460/3                  | 1.26        |
| 575/3                  | 1.00        |

| Unit Voltage And Phase |     |      | Electric Heat KW Limits |      |      |      |      |      |      |      |      |      |      |      |  |  |
|------------------------|-----|------|-------------------------|------|------|------|------|------|------|------|------|------|------|------|--|--|
|                        |     |      | Unit Size               |      |      |      |      |      |      |      |      |      |      |      |  |  |
|                        |     |      | 08                      |      | 12   |      | 16   |      | 20   |      | 30   |      | 40   |      |  |  |
|                        |     |      | Min                     | Max  | Min  | Max  | Min  | Max  | Min  | Max  | Min  | Max  | Min  | Max  |  |  |
| Single Phase           | 115 | kW   | 3                       | 5    | 3    | 5    | 3    | 5    | 4    | 5    |      |      |      |      |  |  |
|                        |     | AMPs | 26.1                    | 43.5 | 26.1 | 43.5 | 26.1 | 43.5 | 34.8 | 43.5 |      |      |      |      |  |  |
|                        | 208 | kW   | 3                       | 9    | 3    | 9    | 3    | 9    | 4    | 9    | 6    | 9    | 7    | 9    |  |  |
|                        |     | AMPs | 14.4                    | 43.3 | 14.4 | 43.3 | 14.4 | 43.3 | 19.2 | 43.3 | 28.8 | 43.3 | 33.7 | 43.3 |  |  |
|                        | 230 | kW   | 3                       | 11   | 3    | 11   | 3    | 11   | 4    | 11   | 6    | 11   | 7    | 11   |  |  |
|                        |     | AMPs | 13.0                    | 47.8 | 13.0 | 47.8 | 13.0 | 47.8 | 17.4 | 47.8 | 26.1 | 47.8 | 30.4 | 47.8 |  |  |
|                        | 277 | kW   | 3                       | 13   | 3    | 13   | 3    | 13   | 4    | 13   | 6    | 13   | 7    | 13   |  |  |
|                        |     | AMPs | 10.8                    | 46.9 | 10.8 | 46.9 | 10.8 | 46.9 | 14.4 | 46.9 | 21.7 | 46.9 | 25.3 | 46.9 |  |  |
| Three Phase            | 208 | kW   | 3                       | 13   | 3    | 16   | 3    | 16   | 4    | 16   | 4    | 16   | 7    | 16   |  |  |
|                        |     | AMPs | 8.3                     | 36.1 | 8.3  | 44.4 | 8.3  | 44.4 | 11.1 | 44.4 | 11.1 | 44.4 | 19.4 | 44.4 |  |  |
|                        | 230 | kW   | 3                       | 13   | 3    | 18   | 3    | 18   | 4    | 18   | 4    | 18   | 7    | 18   |  |  |
|                        |     | AMPs | 7.5                     | 32.6 | 7.5  | 45.2 | 7.5  | 45.2 | 10.0 | 45.2 | 10.0 | 45.2 | 17.6 | 45.2 |  |  |
|                        | 460 | kW   | 3                       | 13   | 3    | 20   | 3    | 20   | 4    | 26   | 4    | 26   | 7    | 38   |  |  |
|                        |     | AMPs | 3.8                     | 16.3 | 3.8  | 25.1 | 3.8  | 25.1 | 5.0  | 32.6 | 5.0  | 32.6 | 8.8  | 47.7 |  |  |
|                        | 575 | kW   | 3                       | 13   | 3    | 20   | 3    | 20   | 4    | 26   | 4    | 26   | 7    | 46   |  |  |
|                        |     | AMPs | 3.0                     | 13.1 | 3.0  | 20.1 | 3.0  | 20.1 | 4.0  | 26.1 | 4.0  | 26.1 | 7.0  | 46.2 |  |  |

Notes:

1. Factory certified submittals available upon request
2. Standard heater kW limits are maximum per unit size and voltage
3. Heater should be sized for a maximum leaving air temperature of 104°F



FORWARD CURVED FAN PERFORMANCE DATA

| TSP<br>[in-wg] | Unit Size<br>Actual<br>CFM | 08    |      |      |      |      | 12    |      |      |      |      | 16    |      |      |      |      |
|----------------|----------------------------|-------|------|------|------|------|-------|------|------|------|------|-------|------|------|------|------|
|                |                            | 600   | 700  | 800  | 900  | 1000 | 1000  | 1100 | 1200 | 1300 | 1400 | 1400  | 1500 | 1600 | 1700 | 1800 |
| 2.4            | RPM                        | -     | -    | -    | -    | 1746 | -     | -    | -    | -    | 1710 | -     | -    | -    | -    | -    |
|                | BHP                        | -     | -    | -    | -    | 0.70 | -     | -    | -    | -    | 1.02 | -     | -    | -    | -    | -    |
| 2.2            | RPM                        | -     | -    | -    | 1670 | 1674 | -     | -    | -    | 1638 | 1638 | -     | -    | -    | -    | 1415 |
|                | BHP                        | -     | -    | -    | 0.57 | 0.65 | -     | -    | -    | 0.87 | 0.95 | -     | -    | -    | -    | 1.08 |
| 2.0            | RPM                        | -     | -    | -    | 1594 | 1598 | -     | -    | -    | 1561 | 1568 | -     | -    | -    | 1349 | 1353 |
|                | BHP                        | -     | -    | -    | 0.52 | 0.59 | -     | -    | -    | 0.79 | 0.88 | -     | -    | -    | 0.92 | 0.99 |
| 1.8            | RPM                        | -     | -    | 1510 | 1514 | 1524 | -     | -    | 1481 | 1485 | 1494 | -     | -    | 1279 | 1283 | 1287 |
|                | BHP                        | -     | -    | 0.41 | 0.47 | 0.55 | -     | -    | 0.66 | 0.73 | 0.81 | -     | -    | 0.78 | 0.84 | 0.91 |
| 1.6            | RPM                        | -     | -    | 1425 | 1430 | 1446 | -     | 1397 | 1397 | 1406 | 1415 | -     | 1206 | 1210 | 1214 | 1218 |
|                | BHP                        | -     | -    | 0.37 | 0.43 | 0.50 | -     | 0.53 | 0.59 | 0.66 | 0.74 | -     | 0.65 | 0.70 | 0.76 | 0.82 |
| 1.4            | RPM                        | -     | 1331 | 1335 | 1347 | 1366 | -     | 1306 | 1314 | 1323 | 1335 | 1128  | 1132 | 1136 | 1140 | 1149 |
|                | BHP                        | -     | 0.28 | 0.33 | 0.39 | 0.45 | -     | 0.47 | 0.53 | 0.60 | 0.67 | 0.53  | 0.58 | 0.63 | 0.68 | 0.75 |
| 1.2            | RPM                        | -     | 1235 | 1242 | 1259 | 1283 | 1209  | 1216 | 1225 | 1236 | 1249 | 1048  | 1052 | 1057 | 1067 | 1077 |
|                | BHP                        | -     | 0.24 | 0.29 | 0.34 | 0.40 | 0.37  | 0.42 | 0.47 | 0.53 | 0.59 | 0.46  | 0.51 | 0.55 | 0.61 | 0.67 |
| 1.0            | RPM                        | 1125  | 1129 | 1145 | 1168 | 1200 | 1109  | 1118 | 1130 | 1144 | 1163 | 962   | 969  | 979  | 988  | 1002 |
|                | BHP                        | 0.17  | 0.21 | 0.25 | 0.30 | 0.36 | 0.32  | 0.36 | 0.41 | 0.47 | 0.53 | 0.40  | 0.44 | 0.49 | 0.54 | 0.60 |
| 0.8            | RPM                        | 1009  | 1022 | 1044 | 1075 | 1113 | 1002  | 1014 | 1030 | 1049 | 1073 | 872   | 882  | 895  | 909  | 923  |
|                | BHP                        | 0.14  | 0.17 | 0.21 | 0.26 | 0.32 | 0.26  | 0.31 | 0.35 | 0.40 | 0.47 | 0.34  | 0.38 | 0.42 | 0.47 | 0.52 |
| 0.6            | RPM                        | 884   | 906  | 939  | 979  | 1024 | 885   | 903  | 926  | 951  | 984  | 777   | 791  | 806  | 822  | 838  |
|                | BHP                        | 0.11  | 0.14 | 0.18 | 0.22 | 0.28 | 0.21  | 0.25 | 0.30 | 0.35 | 0.41 | 0.28  | 0.32 | 0.36 | 0.40 | 0.45 |
| Fan Size       |                            | 0904R |      |      |      |      | 0906R |      |      |      |      | 1008R |      |      |      |      |
| Coil Face Area |                            | 2.1   |      |      |      |      | 2.7   |      |      |      |      | 3.5   |      |      |      |      |
| FPM @ CFM      |                            | 286   | 333  | 381  | 429  | 476  | 370   | 407  | 444  | 481  | 519  | 400   | 429  | 457  | 486  | 514  |

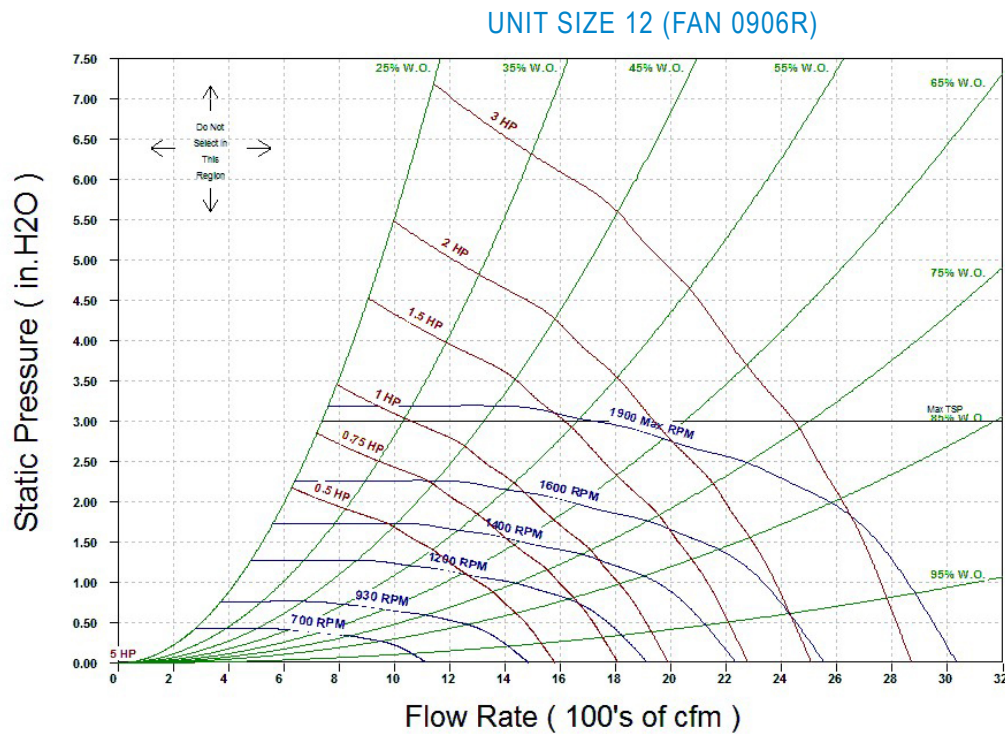
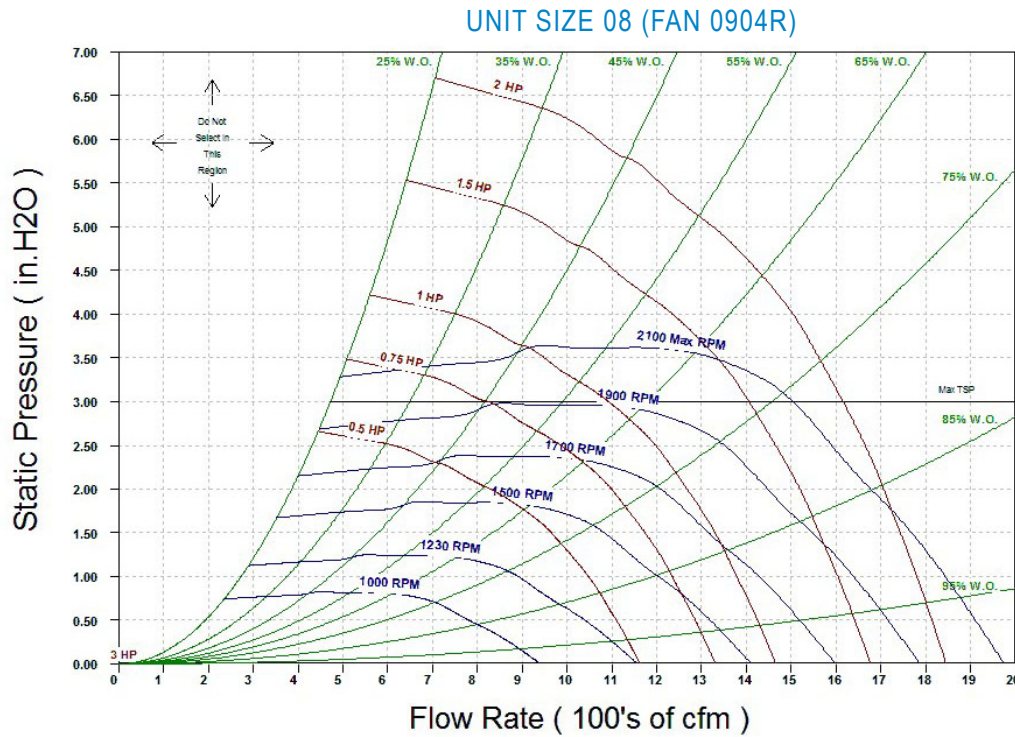
| TSP<br>[in-wg] | Unit Size<br>Actual<br>CFM | 20    |      |       |       |       | 30    |      |      |      |      | 40    |      |      |      |      |
|----------------|----------------------------|-------|------|-------|-------|-------|-------|------|------|------|------|-------|------|------|------|------|
|                |                            | 1800  | 1950 | 2100  | 2250  | 2400  | 2600  | 2800 | 3000 | 3200 | 3400 | 3600  | 3800 | 4000 | 4200 | 4400 |
| 2.4            | RPM                        | -     | -    | -     | -     | 1507  | -     | -    | -    | 1034 | 1037 | -     | -    | -    | 1021 | 1023 |
|                | BHP                        | -     | -    | -     | -     | 1.60  | -     | -    | -    | 2.01 | 2.20 | -     | -    | -    | 2.00 | 2.15 |
| 2.2            | RPM                        | -     | -    | -     | 1441  | 1446  | -     | -    | -    | 992  | 996  | -     | -    | 977  | 979  | 980  |
|                | BHP                        | -     | -    | -     | 1.37  | 1.49  | -     | -    | -    | 1.88 | 2.06 | -     | -    | 1.72 | 1.86 | 1.99 |
| 2.0            | RPM                        | -     | -    | 1373  | 1377  | 1382  | -     | -    | 945  | 949  | 952  | -     | 932  | 933  | 934  | 937  |
|                | BHP                        | -     | -    | 1.15  | 1.26  | 1.37  | -     | -    | 1.59 | 1.75 | 1.91 | -     | 1.46 | 1.58 | 1.71 | 1.85 |
| 1.8            | RPM                        | -     | -    | 1305  | 1310  | 1315  | -     | 896  | 899  | 903  | 906  | -     | 885  | 886  | 888  | 892  |
|                | BHP                        | -     | -    | 1.05  | 1.15  | 1.25  | -     | 1.33 | 1.47 | 1.61 | 1.76 | -     | 1.33 | 1.44 | 1.57 | 1.71 |
| 1.6            | RPM                        | -     | 1230 | 1234  | 1239  | 1251  | 844   | 847  | 851  | 854  | 858  | 834   | 835  | 837  | 841  | 844  |
|                | BHP                        | -     | 0.87 | 0.95  | 1.04  | 1.16  | 1.09  | 1.21 | 1.34 | 1.47 | 1.60 | 1.10  | 1.20 | 1.31 | 1.43 | 1.56 |
| 1.4            | RPM                        | 1150  | 1154 | 1159  | 1170  | 1182  | 792   | 796  | 799  | 803  | 810  | 781   | 783  | 787  | 790  | 794  |
|                | BHP                        | 0.70  | 0.77 | 0.85  | 0.95  | 1.05  | 0.98  | 1.09 | 1.21 | 1.32 | 1.46 | 0.98  | 1.08 | 1.18 | 1.29 | 1.41 |
| 1.2            | RPM                        | 1068  | 1073 | 1085  | 1097  | 1114  | 737   | 741  | 745  | 752  | 759  | 726   | 729  | 732  | 737  | 743  |
|                | BHP                        | 0.61  | 0.68 | 0.76  | 0.85  | 0.96  | 0.87  | 0.97 | 1.07 | 1.19 | 1.31 | 0.86  | 0.96 | 1.05 | 1.16 | 1.27 |
| 1.0            | RPM                        | 981   | 993  | 1006  | 1024  | 1042  | 677   | 682  | 689  | 697  | 705  | 666   | 670  | 676  | 681  | 687  |
|                | BHP                        | 0.52  | 0.60 | 0.67  | 0.76  | 0.86  | 0.75  | 0.84 | 0.95 | 1.05 | 1.17 | 0.75  | 0.83 | 0.93 | 1.02 | 1.12 |
| 0.8            | RPM                        | 892   | 908  | 926   | 947   | 969   | 613   | 621  | 629  | 637  | 648  | 602   | 608  | 614  | 622  | 631  |
|                | BHP                        | 0.45  | 0.52 | 0.59  | 0.68  | 0.77  | 0.64  | 0.72 | 0.82 | 0.92 | 1.03 | 0.64  | 0.72 | 0.79 | 0.89 | 0.99 |
| 0.6            | RPM                        | 800   | 820  | 842   | 865   | 889   | 544   | 553  | 564  | 576  | 590  | 532   | 541  | 550  | 559  | 570  |
|                | BHP                        | 0.38  | 0.44 | 0.51  | 0.59  | 0.68  | 0.53  | 0.61 | 0.70 | 0.79 | 0.90 | 0.52  | 0.60 | 0.67 | 0.76 | 0.85 |
| Fan Size       |                            | 1010R |      |       |       |       | 1509R |      |      |      |      | 1511R |      |      |      |      |
| Coil Face Area |                            | 4.9   |      |       |       |       | 6.5   |      |      |      |      | 8.4   |      |      |      |      |
| FPM @ CFM      |                            | 367   | 398  | 428.6 | 459.2 | 489.8 | 400   | 431  | 462  | 492  | 523  | 429   | 452  | 476  | 500  | 524  |

Notes:

1. Consult Superior Rex for applications at operating conditions not shown above
2. Fan motor voltage, fan rotation, and fan RPM may require field setting/adjustment
3. Drive losses not included in fan performance



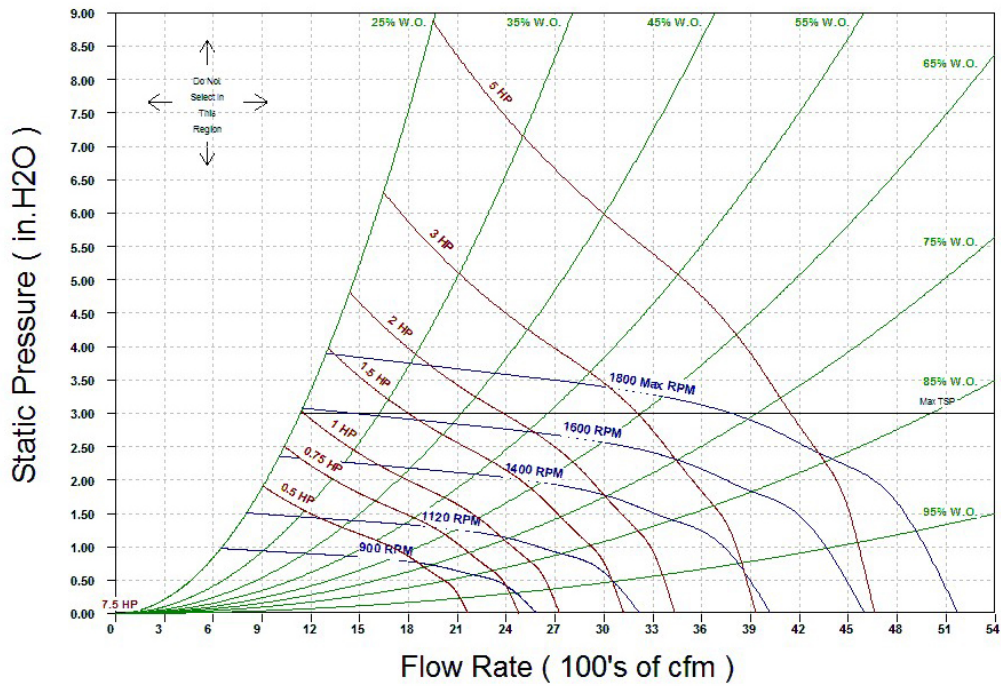
Fan Performance Curves



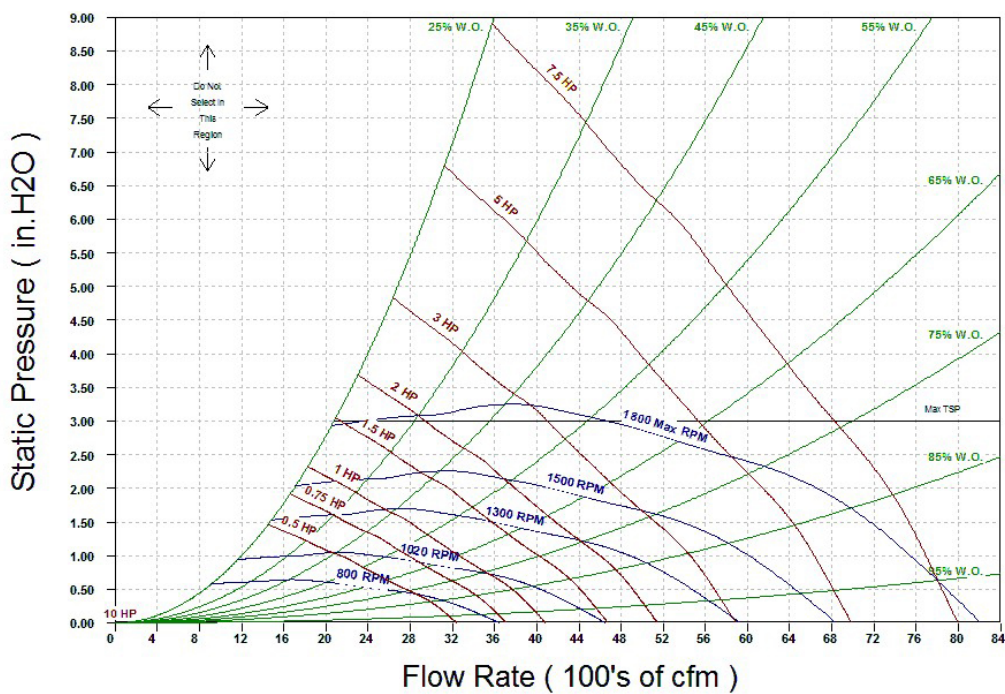


FAN CURVES

UNIT SIZE 16 (FAN 1008R)

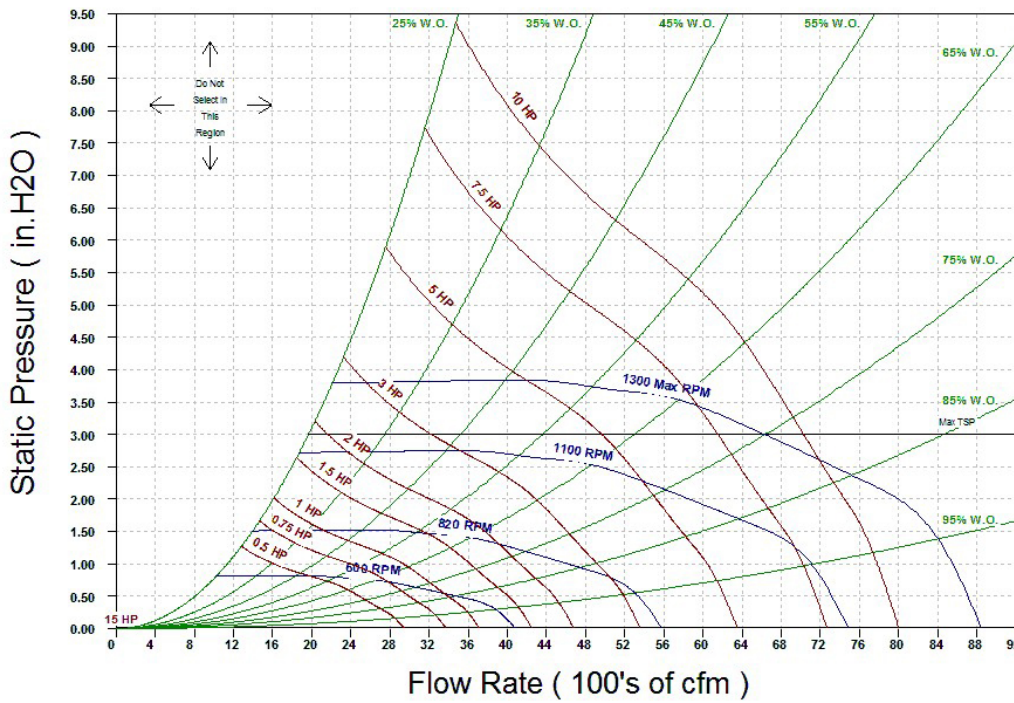


UNIT SIZE 20 (FAN 1010R)

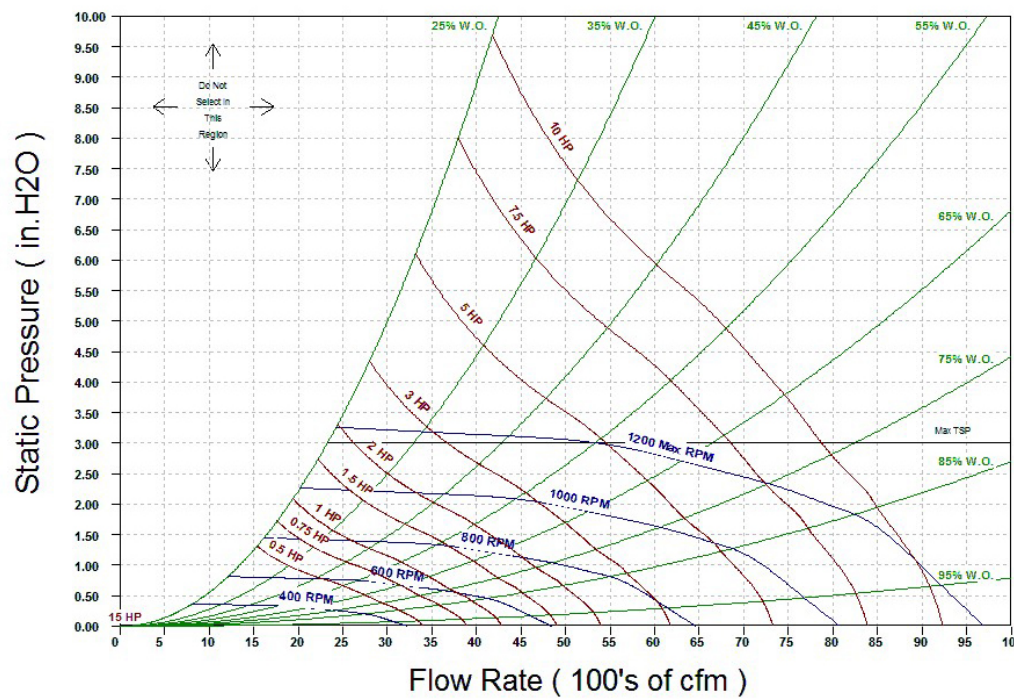


FAN CURVES

UNIT SIZE 30 (FAN 1509R)



UNIT SIZE 40 (FAN 1511R)





## SSL / SBS Series Design Features

BUILT TOUGH, BUILT TO LAST™ | www.superiorrex.com

### DESIGNED FLEXIBILITY

Superior Rex SSL/SBS Belt Drive Blower Coils give maximum flexibility for selection and installation where extreme space restrictions exist. The units are designed with a slant coil and all front access to minimize the space used for installation.

The units are designed to exceed the stringent quality standards of the institutional market, while remaining cost competitive in the light commercial segment of the market.

Superior Rex Belt Drive Blower Coils set the new standards for quality, flexibility, and competitive pricing.

### OPTIONAL COMPONENTS

The extensive variety of standard options available on the SSL/SBS units are where you find the versatility to fit any HVAC system designer's needs.

Options include: Mixing boxes with standard low-leak dampers, blow-thru electric heat with or without single point power connection. All electric heat units are listed with ETL as an assembly and carry the cETL label.

High efficiency motors, starters, disconnects and fusing mean easier coordination between mechanical and electrical trades.

Coil options allow for 4 or 6 row cooling coils.

### LOWER INSTALLATION COST

All SSL/SBS model blower coils are shipped completely assembled, reducing field installation time and labor. All units are thoroughly inspected and tested prior to shipment, eliminating potential problems at startup. Motor wiring is brought to a junction box and terminated. The junction box is located on the outside of the unit casing, reducing electrical hook-up time.

A wide variety of fan discharge configurations allow for increased flexibility and easier installation on the jobsite, resulting in cost reductions by eliminating expensive elbows, etc.

### QUALITY PRODUCT

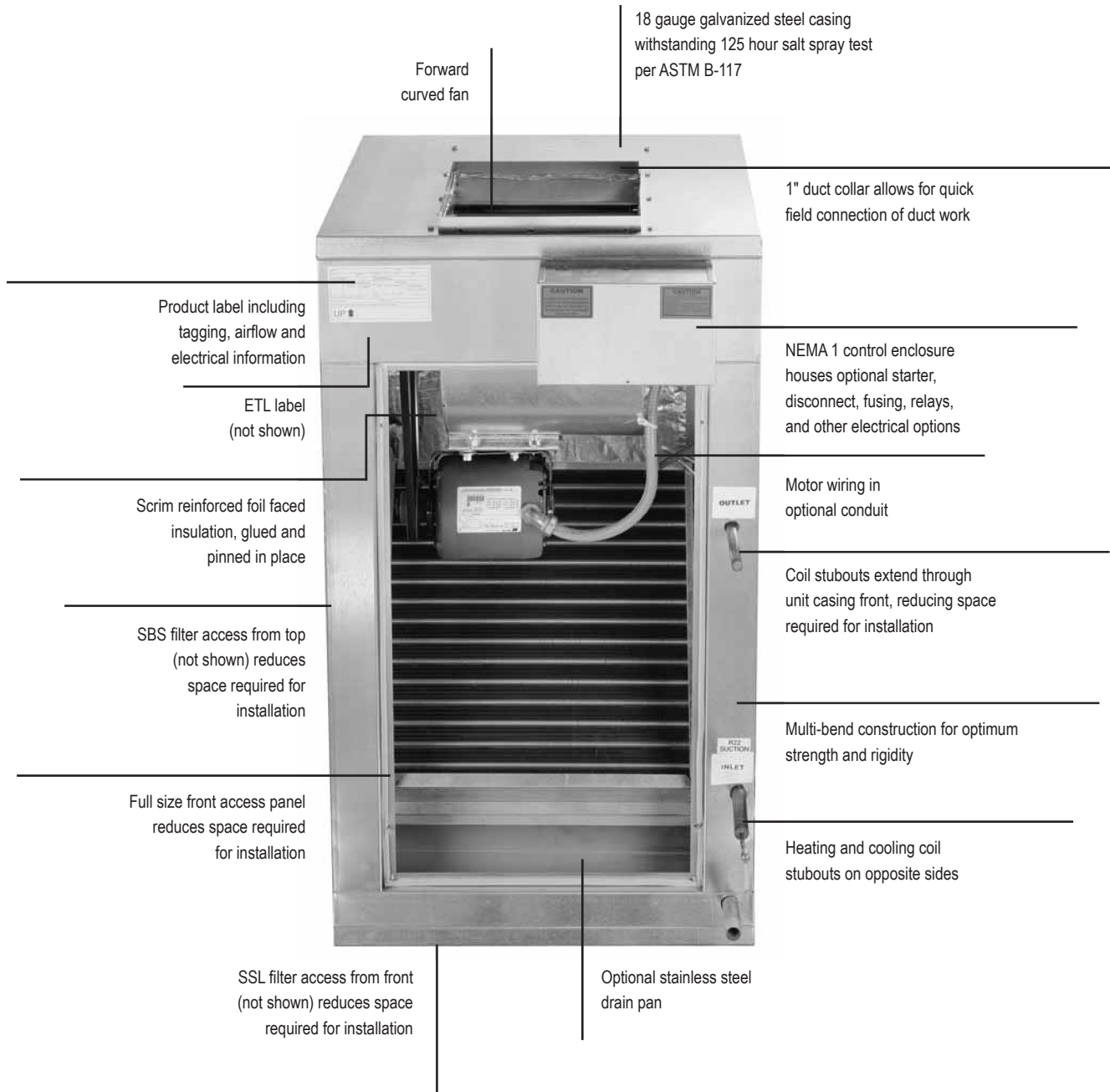
SSL/SBS model blower coils are constructed from 18 gauge galvanized steel. This metal surpasses the ASTM 125 hour salt spray test for corrosion and rust. Insulation is 1 inch thick, 1.6 pound per cubic foot scrim reinforced foil faced insulation, which is glued, pinned and taped for maximum positive adhesion. Insulation complies with UL 181, ASTM-C1071, NFPA 90A and 90B and meets bacteriological standard ASTM-C665 and C1136 for mold, mildew and humidity resistance.

All units, with or without Electric Heat, are cETL listed and labeled. All wiring is in compliance with NEC, assuring safety and quality for the owner.

Construction Features

MODELS - SSL / SBS

Models SSL and SBS blower coils have many standard and optional features which are unique to the industry



BUILT TOUGH, BUILT TO LAST™ | www.superiorrex.com

CONSTRUCTION FEATURES



### APPLICATION CONSIDERATIONS

Models SSL & SBS Belt Drive Blower Coils offer a wide range of application flexibility, while maintaining a simple, easy to install unit design. These units are intended to provide comfort cooling and heating within a small footprint. They may be applied in many types of building structures including schools, office buildings, hospitals, condominiums, assisted living facilities, apartments or stores. Applications can be constant or variable volume.

There are many applications the SBH & SBV product can be utilized. Some examples are listed below.

#### Constant volume applications:

- » Two-pipe hydronic system for cooling and/or heating
- » Two-pipe hydronic cooling system with electric heat
- » Four-pipe system with dedicated heating and cooling coils
- » Direct Expansion (DX) split systems with hydronic heat
- » Direct Expansion (DX) split systems with electric heat

#### Variable volume applications:

- » Two-pipe hydronic system for cooling and/or heating
- » Two-pipe hydronic cooling system with electric heat
- » Four-pipe system with dedicated heating and cooling coils

### ACOUSTICS

Control of noise within both occupied and unoccupied spaces has become increasingly important to designers and building owners/occupants. Proper consideration must be given to placement of indoor air conditioning units, particularly in the occupied space. Inherent flexibility of the fan and coil combination in the vertical configuration allows application in sound-sensitive areas. In such instances, a fan running at a low speed with a high capacity coil normally yields satisfactory results. It also may be desirable to select a larger nominal capacity unit and operate it at a less than nominal airflow for further acoustic benefit.

Three phase motors are recommended for sound sensitive applications to avoid potential single phase motor hum. Unit operation in the stall region of the fan curve is not recommended since it may cause unsatisfactory noise levels and excessive unit vibration.

### INSTALLATION

These floor mounted units can be installed with external vibration isolation on a base rail (SBS) or on a return plenum (SSL) at the corner points. This requires flex connections at the corner brackets, ductwork, electrical connections and piping connections. One of the most important and basic IAQ issues is condensate management. The first step to ensure trouble-free operation is proper installation. It is very important that the unit be mounted high enough so that the condensate drain from the unit may be properly trapped. Please refer to the SSL/SBS IOM Manual for specifics on this issue. As with all HVAC systems, these units should be installed according to all applicable ASHRAE standards, SMACNA and local code requirements.

### OPERATING LIMITATIONS

Units must not be operated above maximum fan speed or unit airflow as listed in the Fan Performance section of this catalog. Unit operation at greater than maximum fan speed could drastically reduce bearing life and may result in a catastrophic wheel failure. Operating at greater than the maximum allowable airflow in the cooling mode may result in unsatisfactory operation due to moisture carry over from the coil. In addition, it is often not economical to operate a unit at its maximum fan speed due to the greater motor power requirements.

Units with electric heat should not be operated with leaving air temperature greater than 104°F (40°C), to prevent excessive leaving air temperatures and electric heat limit trips. A hydronic (or steam) coil and electric heat should not be operated simultaneously to prevent excessive leaving air temperatures and limit trips. Electric heat units are equipped with a high limit lockout switch that disables the electric heater if the temperature of the hydronic coil is greater than 104°F (40°C).

Water coils must not be operated above a fluid velocity of 8 ft./sec. to reduce the possibility of velocity induced erosion and flow noise. Water coils must not be operated below a fluid velocity of 1 ft./sec. to prevent degraded coil performance caused by laminar flow. These high or low fluid flow rates may not be included in the AHRI coil certification.

Horizontal & Vertical Belt Drives (continued)

## SSL

- » Low-leak dampers with 2" filters
- » Maximum flexibility for selection and installation where extreme space restrictions exist
- » Foil faced fiberglass-insulated cabinets, main incoming-power disconnect (non-fused), fusing (main), magnetic contractors, and fan control package with heater interlock contacts
- » Blow-thru electric heat with single-point power connection
- » Meets all N.E.C. requirements and is cETL listed in compliance with UL/ANSI Std. 1995
- » Hot water, chilled water, steam, and direct expansion coils; cold water/hot water changeover available for all models
- » Inherent flexibility of the fan and coil combination for sound-sensitive areas
- » 800 - 3000 CFM nominal airflows



SSL

### AVAILABLE MODEL:

SSL

### OVERVIEW

Superior Rex bottom return belt drive blower coils offer a wide range of application flexibility, while maintaining a simple, easy to install unit design. These units are intended to provide comfort cooling and heating with a small footprint. They may be applied in many types of building structures including schools, office buildings, hospitals, condominiums, assisted living facilities, apartments or stores. Applications can be constant or variable volume.

### OPTIONAL FEATURES INCLUDE:

#### Construction

- » Stainless steel drain pan with 1" MPT galvanized pipe outlet
- » External rubber-in-shear or spring type vibration isolators, floor mount
- » Fan discharge arrangements
- » Discharge plenum w/ double deflection discharge grille
- » Access panel with lift and turn fasteners
- » Double wall access panel w/lift and turn fasteners
- » Return plenum with removable panels (SSL only)
- » Base rails with rigging slots factory assembled and installed

#### Fan Motor and Drive

- » High efficiency motors
- » TEFC motors

#### Coils

- » 4 and 6 row chilled water or R410 DX coils
- » 1 and 2 row hot water coils



See website for Specifications

- » 1 and 2 row hot water or standard steam coils in discharge coil section only
- » Hot water coil in preheat or reheat position
- » Stainless steel coil casings
- » 0.025" tube wall on water and evaporator coils
- » Auto air vents on water coils

#### Filters and Filter Rack

- » Side access filter rack (SBS only)
- » 2" pleated filter
- » Spare throwaway or pleated filters

#### Electrical

- » Motor wiring in conduit
- » Motor starter (contactor with overload for three phase; contactor for single phase), factory installed (mounted and wired)
- » Door interlocking disconnect switch (non-fused) (with main fusing)
- » Hand off auto switch (HOA)
- » Main fusing

#### Electric Heat Section

- » Factory mounted electric heater with single point power connection, ETL listed as an assembly



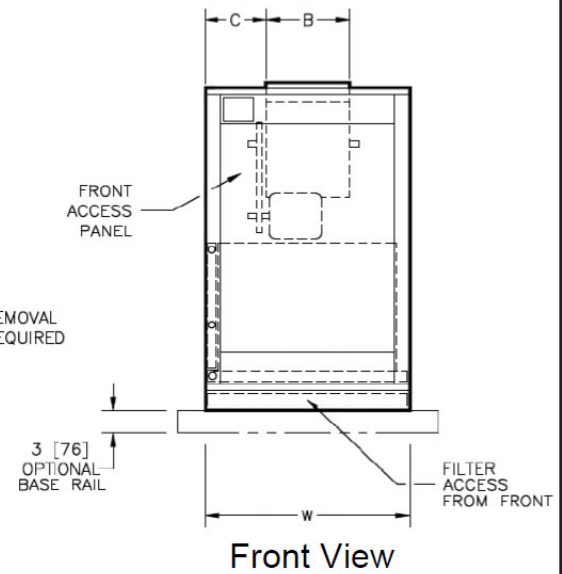
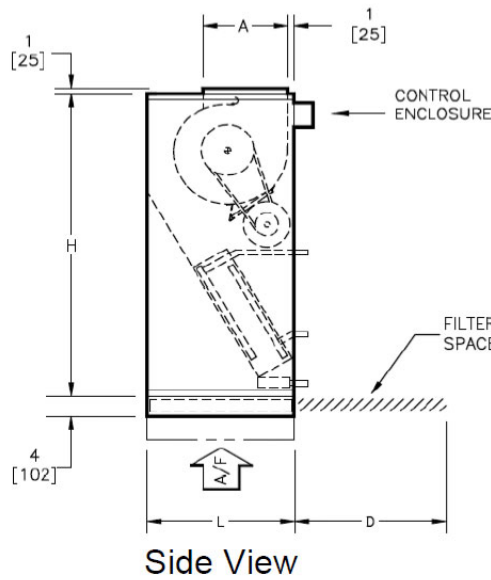
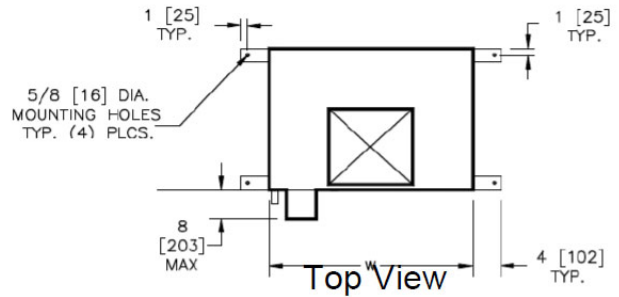
A Participating Corporation in the  
AHRI 430 Certification Program



SSL UNIT DIMENSIONS

Notes:

1. All dimensions are inches [millimeters] +/- 1/4" [6mm]. Metric values are soft conversions.
2. Motor/drive location may be specified Left or Right Hand. Standard control enclosure location matches motor/drive position.
3. Provide sufficient clearance to access electrical control and comply with all applicable codes and ordinances
4. Maximum total internal coil rows: 6
5. All drawings subject to change without prior notice
6. Left hand unit shown; right hand unit has CW and HW piping connections mirrored
7. Filter assembly runs the full length of the unit size
8. Drawings not for installation purposes



| Dimensions |                                 |        |           |          |          |              |              |               |          |
|------------|---------------------------------|--------|-----------|----------|----------|--------------|--------------|---------------|----------|
| Unit Size  | Filter Size                     | Qty    | H         | W        | L        | A            | B            | C             | D        |
| 08         | 16 x 20 x 2<br>[406 x 508 x 51] | 1      | 46 [1168] | 26 [660] | 19 [483] | 6 1/2 [165]  | 6 7/8 [175]  | 9 9/16 [243]  | 16 [406] |
| 12         | 20 x 20 x 2<br>[508 x 508 x 51] | 1      | 46 [1168] | 26 [660] | 21 [533] | 7 1/2 [190]  | 8 1/4 [210]  | 8 7/8 [225]   | 20 [508] |
| 16         | 24 x 24 x 2<br>[610 x 610 x 51] | 1      | 54 [1372] | 29 [737] | 25 [635] | 7 1/2 [190]  | 10 1/4 [260] | 9 3/8 [238]   | 24 [610] |
| 20         | 24 x 24 x 2<br>[610 x 610 x 51] | 1      | 54 [1372] | 29 [737] | 28 [711] | 11 3/8 [289] | 13 1/4 [337] | 7 7/8 [200]   | 24 [610] |
| 25         | 24 x 24 x 2<br>[610 x 610 x 51] | 1 Each | 60 [1524] | 39 [991] | 28 [711] | 13 1/2 [343] | 12 7/8 [327] | 13 1/16 [332] | 24 [610] |
| 30         | 12 x 24 x 2<br>[305 x 610 x 51] | 1 Each | 60 [1524] | 39 [991] | 28 [711] | 15 1/4 [387] | 15 [381]     | 12 [305]      | 24 [610] |

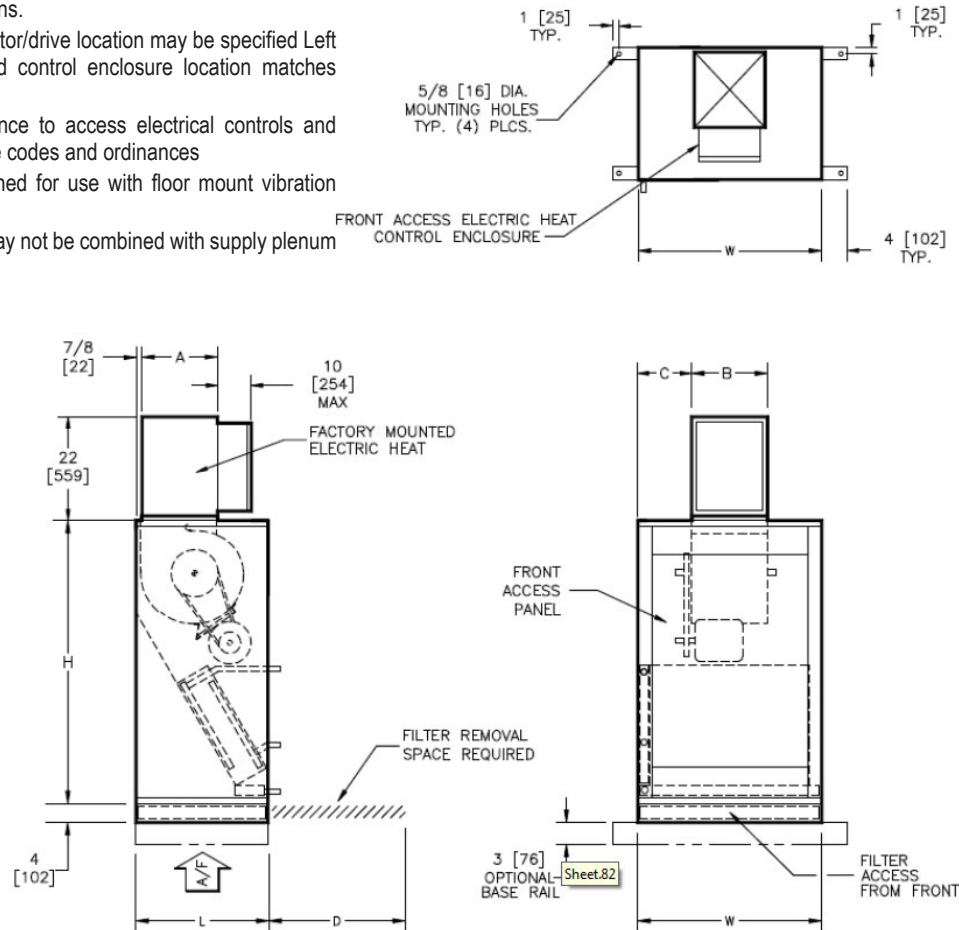


Dimensions

SSL UNIT DIMENSIONS / BLOW-THRU ELECTRIC HEAT

**Notes:**

1. All dimensions are inches [millimeters] +/- 1/4" [6mm]. Metric values are soft conversions.
2. Left hand unit shown. Motor/drive location may be specified Left or Right Hand. Standard control enclosure location matches motor/drive position
3. Provide sufficient clearance to access electrical controls and comply with all applicable codes and ordinances
4. Optional base rail designed for use with floor mount vibration isolators
5. Blow-thru electric heat may not be combined with supply plenum or discharge section



| Dimensions |                                 |        |           |          |          |              |              |               |          |
|------------|---------------------------------|--------|-----------|----------|----------|--------------|--------------|---------------|----------|
| Unit Size  | Filter Size                     | Qty    | H         | W        | L        | A            | B            | C             | D        |
| 08         | 16 x 20 x 2<br>[406 x 508 x 51] | 1      | 46 [1168] | 26 [660] | 19 [483] | 8 7/8 [226]  | 11 7/8 [302] | 7 1/16 [180]  | 16 [406] |
| 12         | 20 x 20 x 2<br>[508 x 508 x 51] | 1      | 46 [1168] | 26 [660] | 21 [533] | 8 7/8 [226]  | 11 7/8 [302] | 7 1/16 [180]  | 20 [508] |
| 16         | 24 x 24 x 2<br>[610 x 610 x 51] | 1      | 54 [1372] | 29 [737] | 25 [635] | 10 7/8 [277] | 12 [305]     | 8 1/2 [216]   | 24 [610] |
| 20         | 24 x 24 x 2<br>[610 x 610 x 51] | 1      | 54 [1372] | 29 [737] | 28 [711] | 13 7/8 [353] | 14 [356]     | 7 1/2 [190]   | 24 [610] |
| 25         | 24 x 24 x 2<br>[610 x 610 x 51] | 1 Each | 60 [1524] | 39 [991] | 28 [711] | 13 7/8 [353] | 16 5/8 [422] | 11 1/16 [281] | 24 [610] |
| 30         | 12 x 24 x 2<br>[305 x 610 x 51] | 1 Each | 60 [1524] | 39 [991] | 28 [711] | 15 5/8 [397] | 16 5/8 [422] | 11 1/16 [281] | 24 [610] |



## SBS

- » Low-leak dampers with 2" filters
- » Floor-mounted unit with external vibration isolation on a base rail
- » Maximum flexibility for selection and installation where extreme space restrictions exist
- » Foil faced fiberglass-insulated cabinets, main incoming-power disconnect (non-fused), fusing (main), magnetic contractors, and fan control package with heater interlock contacts
- » Blow-thru electric heat with single-point power connection
- » Meets all N.E.C. requirements and is cETL listed in compliance with UL/ANSI Std. 1995
- » Hot water, chilled water, steam, and direct expansion coils; cold water/hot water changeover available for all models
- » Inherent flexibility of the fan and coil combination for sound-sensitive areas
- » 800 - 3000 CFM nominal airflows



SBS

### AVAILABLE MODEL:

SBS

### OVERVIEW

Superior Rex rear return belt drive blower coils offer a wide range of application flexibility, while maintaining a simple, easy to install unit design. These units are intended to provide comfort cooling and heating with a small footprint. They may be applied in many types of building structures including schools, office buildings, hospitals, condominiums, assisted living facilities, apartments or stores. Applications can be constant or variable volume.

### OPTIONAL FEATURES INCLUDE:

#### Construction

- » Stainless steel drain pan with 1" MPT galvanized pipe outlet
- » External rubber-in-shear or spring type vibration isolators, floor mount
- » Fan discharge arrangements
- » Discharge plenum w/ double deflection discharge grille
- » Access panel with lift and turn fasteners
- » Double wall access panel w/lift and turn fasteners
- » Return plenum with removable panels (SSL only)
- » Base rails with rigging slots factory assembled and installed

#### Fan Motor and Drive

- » High efficiency motors
- » TEFC motors

#### Coils

- » 4 and 6 row chilled water or DX coils
- » 1 and 2 row hot water coils
- » 1 and 2 row hot water or standard steam coils in discharge coil section only



See website for Specifications

- » Hot water coil in preheat or reheat position
- » Stainless steel coil casings
- » 0.025" tube wall on water and evaporator coils
- » Auto air vents on water coils

#### Filters and Filter Rack

- » Side access filter rack (SBS only)
- » 2" pleated filter
- » Spare throwaway or pleated filters

#### Inlet Damper Section

- » Factory assembled and installed
- » Heavy gauge galvanized steel formed blade dampers
- » Low-leak dampers with extruded vinyl blade seals and flexible metal jamb seals
- » Parallel blade operation
- » Interconnecting damper linkage



**Electrical**

- » Motor wiring in conduit
- » Motor starter (contactor with overload for three phase; contactor for single phase), factory installed (mounted and wired)
- » Door interlocking disconnect switch (non-fused) (with main fusing)
- » Hand off auto switch (HOA)
- » Main fusing

**Electric Heat Section**

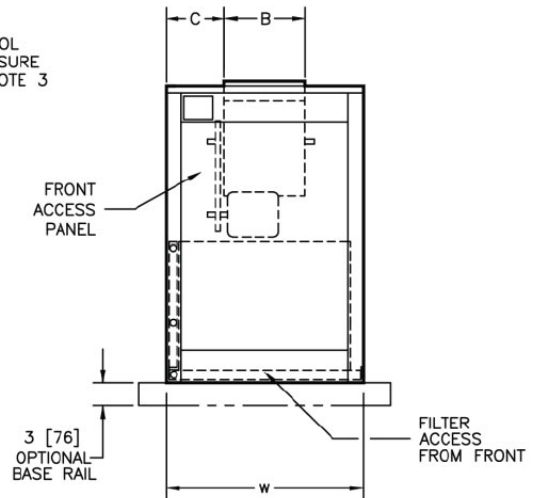
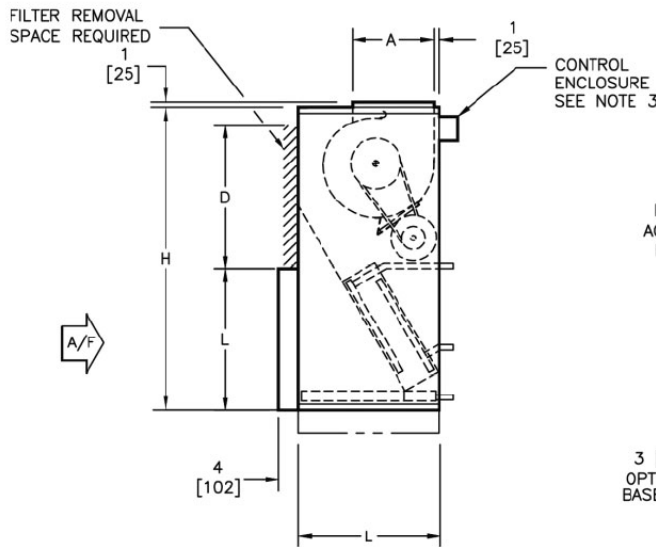
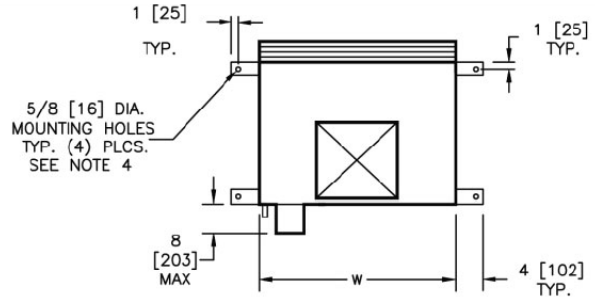
- » Factory mounted electric heater with single point power connection, ETL listed as an assembly



SBS UNIT DIMENSIONS

Notes:

1. All dimensions are inches [millimeters] +/- 1/4" [6mm]. Metric values are soft conversions.
2. Motor/drive location may be specified Left or Right Hand. Standard control enclosure location matches motor/drive position.
3. Provide sufficient clearance to access electrical control and comply with all applicable codes and ordinances
4. Maximum total internal coil rows: 6
5. All drawings subject to change without prior notice
6. Left hand unit shown; right hand unit has CW and HW piping connections mirrored
7. Filter assembly runs the full length of the unit size
8. Drawings not for installation purposes



Side View

Front View

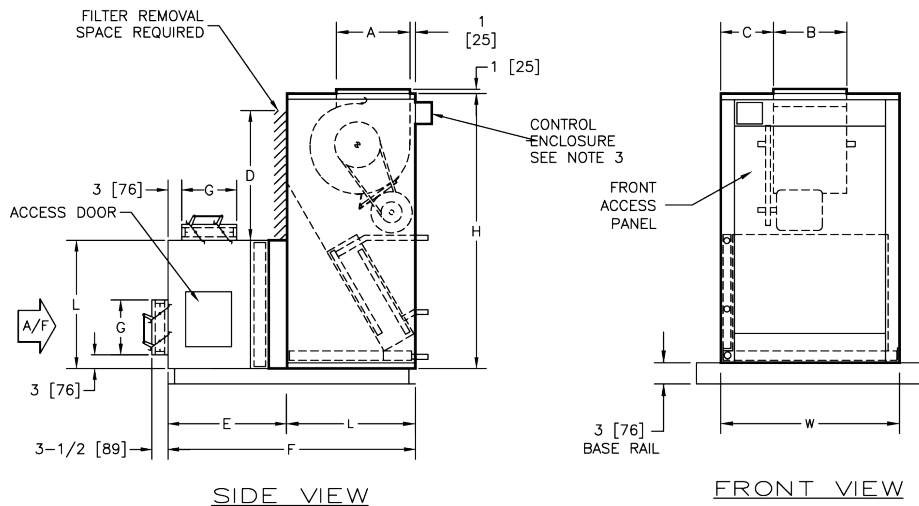
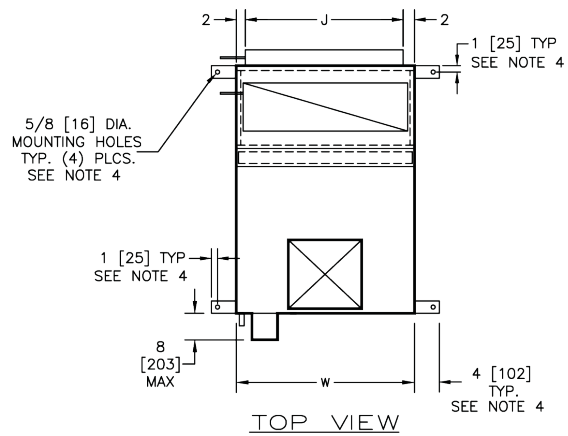
| Dimensions |                                 |        |           |          |          |              |              |               |          |
|------------|---------------------------------|--------|-----------|----------|----------|--------------|--------------|---------------|----------|
| Unit Size  | Filter Size                     | Qty    | H         | W        | L        | A            | B            | C             | D        |
| 08         | 16 x 20 x 2<br>[406 x 508 x 51] | 1      | 46 [1168] | 26 [660] | 19 [483] | 6 1/2 [165]  | 6 7/8 [175]  | 9 9/16 [243]  | 16 [406] |
| 12         | 20 x 20 x 2<br>[508 x 508 x 51] | 1      | 46 [1168] | 26 [660] | 21 [533] | 7 1/2 [190]  | 8 1/4 [210]  | 8 7/8 [225]   | 20 [508] |
| 16         | 24 x 24 x 2<br>[610 x 610 x 51] | 1      | 54 [1372] | 29 [737] | 25 [635] | 7 1/2 [190]  | 10 1/4 [260] | 9 3/8 [238]   | 24 [610] |
| 20         | 24 x 24 x 2<br>[610 x 610 x 51] | 1      | 54 [1372] | 29 [737] | 28 [711] | 11 3/8 [289] | 13 1/4 [337] | 7 7/8 [200]   | 24 [610] |
| 25         | 24 x 24 x 2<br>[610 x 610 x 51] | 1 Each | 60 [1524] | 39 [991] | 28 [711] | 16 [406]     | 12 7/8 [327] | 13 1/16 [332] | 24 [610] |
| 30         | 12 x 24 x 2<br>[305 x 610 x 51] | 1 Each | 60 [1524] | 39 [991] | 28 [711] | 16 [406]     | 15 [381]     | 12 [305]      | 24 [610] |

Dimensions

SBS UNIT DIMENSIONS / INLET DAMPER SECTION

**Notes:**

1. All dimensions are inches [millimeters] +/- 1/4" [6mm]. Metric values are soft conversions.
2. Left hand unit shown. Motor/drive location may be specified Left or Right Hand. Standard control enclosure location matches motor/drive position
3. Provide sufficient clearance to access electrical controls and comply with all applicable codes and ordinances
4. Optional base rail designed for use with floor mount vibration isolators
5. Blow-thru electric heat may not be combined with supply plenum or discharge section



| Dimensions |                                 |        |           |          |          |              |              |               |          |
|------------|---------------------------------|--------|-----------|----------|----------|--------------|--------------|---------------|----------|
| Unit Size  | Filter Size                     | Qty    | H         | W        | L        | A            | B            | C             | D        |
| 08         | 16 x 20 x 2<br>[406 x 508 x 51] | 1      | 46 [1168] | 26 [660] | 19 [483] | 8 7/8 [226]  | 11 7/8 [302] | 7 1/16 [180]  | 16 [406] |
| 12         | 20 x 20 x 2<br>[508 x 508 x 51] | 1      | 46 [1168] | 26 [660] | 21 [533] | 8 7/8 [226]  | 11 7/8 [302] | 7 1/16 [180]  | 20 [508] |
| 16         | 24 x 24 x 2<br>[610 x 610 x 51] | 1      | 54 [1372] | 29 [737] | 25 [635] | 10 7/8 [277] | 12 [305]     | 8 1/2 [216]   | 24 [610] |
| 20         | 24 x 24 x 2<br>[610 x 610 x 51] | 1      | 54 [1372] | 29 [737] | 28 [711] | 13 7/8 [353] | 14 [356]     | 7 1/2 [190]   | 24 [610] |
| 25         | 24 x 24 x 2<br>[610 x 610 x 51] | 1 Each | 60 [1524] | 39 [991] | 28 [711] | 13 7/8 [353] | 16 5/8 [422] | 11 1/16 [281] | 24 [610] |
| 30         | 12 x 24 x 2<br>[305 x 610 x 51] | 1 Each | 60 [1524] | 39 [991] | 28 [711] | 15 5/8 [397] | 16 5/8 [422] | 11 1/16 [281] | 24 [610] |



## Coil and Filter Data

### COIL FACE AREA AND FILTER DATA

| Unit Size | Internal Cooling And Heating Coils | Discharge Section Heating Coil | 2" Filters (Quantity) and Size                                       | Filter Face Area |
|-----------|------------------------------------|--------------------------------|--|------------------|
| 08        | 2.1 [0.20]                         | 2.1 [0.20]                     | (1) 16 x 20 x 2 [406 x 508 x 51]                                     | 2.2 [0.20]       |
| 12        | 2.8 [0.26]                         | 2.1 [0.20]                     | (1) 20 x 20 x 2 [508 x 508 x 51]                                     | 2.8 [0.26]       |
| 16        | 3.6 [0.33]                         | 3.2 [0.30]                     | (1) 24 x 24 x 2 [610 x 610 x 51]                                     | 4.0 [0.37]       |
| 20        | 4.8 [0.45]                         | 3.2 [0.30]                     | (1) 24 x 24 x 2 [610 x 610 x 51]                                     | 4.0 [0.37]       |
| 25        | 5.7 [0.53]                         | 4.6 [0.43]                     | (1) 24 x 24 x 2 [610 x 610 x 51]<br>(1) 12 x 24 x 2 [305 x 610 x 51] | 6.0 [0.56]       |
| 30        | 6.8 [0.63]                         | 5.7 [0.53]                     | (1) 24 x 24 x 2 [610 x 610 x 51]<br>(1) 12 x 24 x 2 [305 x 610 x 51] | 6.0 [0.56]       |

**Notes:**

- Standard filters are 2" throwaway; optional filters are 2" pleated
- Filter sizes are nominal and standard size, measured in inches [millimeters]
- Coil and filter face areas are measured in square feet [square meters]

### NOMINAL COIL CONNECTION SIZES

| Unit Size | Coil Type |          |            |            |            |            |            |            |             |            |          |            |
|-----------|-----------|----------|------------|------------|------------|------------|------------|------------|-------------|------------|----------|------------|
|           | Water     |          |            |            | Steam      |            |            |            | Refrigerant |            |          |            |
|           | 1 Row     | 2 Row    | 4 Row      | 6 Row      | 1 Row      |            | 2 Row      |            | 4 Row       |            | 6 Row    |            |
|           |           |          |            |            | STM.       | COND.      | STM.       | COND.      | Liquid      | Suction    | Liquid   | Suction    |
| 08        | 5/8 [16]  | 5/8 [16] | 7/8 [22]   | 7/8 [22]   | 1 1/8 [29] | 7/8 [22]   | 1 1/8 [29] | 7/8 [22]   | 5/8 [16]    | 5/8 [16]   | 5/8 [16] | 5/8 [16]   |
| 12        | 5/8 [16]  | 5/8 [16] | 7/8 [22]   | 7/8 [22]   | 1 1/8 [29] | 7/8 [22]   | 1 1/8 [29] | 7/8 [22]   | 5/8 [16]    | 7/8 [22]   | 5/8 [16] | 7/8 [22]   |
| 16        | 5/8 [16]  | 5/8 [16] | 7/8 [22]   | 1 1/8 [29] | 1 1/8 [29] | 7/8 [22]   | 1 3/8 [35] | 1 1/8 [29] | 5/8 [16]    | 7/8 [22]   | 5/8 [16] | 7/8 [22]   |
| 20        | 5/8 [16]  | 5/8 [16] | 7/8 [22]   | 1 1/8 [29] | 1 3/8 [35] | 1 1/8 [29] | 1 3/8 [35] | 1 1/8 [29] | 5/8 [16]    | 7/8 [22]   | 5/8 [16] | 7/8 [22]   |
| 25        | 5/8 [16]  | 7/8 [22] | 1 1/8 [29] | 1 3/8 [35] | 1 3/8 [35] | 1 1/8 [29] | 1 5/8 [41] | 1 1/8 [29] | 5/8 [16]    | 7/8 [22]   | 5/8 [16] | 1 1/8 [29] |
| 30        | 7/8 [22]  | 7/8 [22] | 1 1/8 [29] | 1 3/8 [35] | 1 5/8 [41] | 1 1/8 [29] | 1 5/8 [41] | 1 1/8 [29] | 5/8 [16]    | 1 1/8 [29] | 5/8 [16] | 1 1/8 [29] |

**Notes:**

- Water coils are based on Standard GPM Circuiting. Consult Superior Rex for applications requiring special circuiting
- For other selections, refer to RAMP
- Refrigerant coil connection sizes for single circuit coils and may vary with application. Contact Superior Rex for double circuit coils
- All dimensional data is outside diameter (O.D.), measured in inches [millimeters]

Performance Data

COIL DATA

COILS

Superior Rex manufactures hot water, chilled water, direct expansion (DX), and standard steam coils for specific application with all Model SSL/SBS blower coils. AHRI 410 certified and labeled, and strict on-site

inspection before, during, and after installation guarantees the highest quality and performance available.

Standard Features

- » Designed, manufactured and tested by Superior Rex
- » AHRI 410 certified and labeled
- » ½" O.D. seamless copper tubes
- » High efficiency aluminum fin surface for optimizing heat transfer, pressure drop and carryover
- » Mechanically expanded copper tubes leak tested to a minimum 450 PSIG air pressure under water
- » Manual air vent plug on all water coils
- » Copper ODM sweat connections
- » 300 PSIG working pressure at 200°F
- » Evaporator coils are factory sealed and charged with a minimum of 5 PSIG nitrogen or refrigerated dry air
- » Steam coils rated at 15 PSIG maximum operating pressure at above 35°F
- » 0.016" tube wall thickness (0.025" on steam)

Optional Features

- » Stainless steel coil casings
- » Automatic air vents on water coils
- » Elevated working pressure ratings
- » Heat pump compatible cooling coils
- » Double circuit DX coils (intertwined with 50-50 split)
- » 0.025" tube wall thickness



COMPONENT STATIC PRESSURE LOSS – INCHES W.G.

| Unit Size | Nominal CFM | Cabinet | Filter (2" T/A) | Coil     |       |       |       |          |       | Inlet Damper Section | Electric Heat Section |
|-----------|-------------|---------|-----------------|----------|-------|-------|-------|----------|-------|----------------------|-----------------------|
|           |             |         |                 | Internal |       |       |       | External |       |                      |                       |
|           |             |         |                 | 1 Row    | 2 Row | 4 Row | 6 Row | 1 Row    | 2 Row |                      |                       |
| 08        | 800         | 0.09    | 0.25            | 0.05     | 0.10  | 0.31  | 0.46  | 0.05     | 0.10  | 0.04                 | 0.05                  |
| 12        | 1200        | 0.09    | 0.25            | 0.06     | 0.12  | 0.37  | 0.55  | 0.10     | 0.19  | 0.06                 | 0.05                  |
| 16        | 1600        | 0.10    | 0.25            | 0.06     | 0.12  | 0.38  | 0.58  | 0.08     | 0.15  | 0.09                 | 0.05                  |
| 20        | 2000        | 0.11    | 0.25            | 0.06     | 0.11  | 0.35  | 0.52  | 0.11     | 0.22  | 0.05                 | 0.05                  |
| 25        | 2500        | 0.12    | 0.25            | 0.06     | 0.12  | 0.38  | 0.57  | 0.09     | 0.17  | 0.06                 | 0.05                  |
| 30        | 3000        | 0.14    | 0.25            | 0.06     | 0.12  | 0.38  | 0.57  | 0.08     | 0.16  | 0.08                 | 0.05                  |

Notes:

1. All static pressures are at nominal CFM
2. Coil static pressure for standard coil, 10FPI at 80/67 EAT and 45° EWT with 10° rise
3. For 12FPI, refer to RAMP
4. Filter static pressure based on 50% loaded filter
5. If pleated filters are used in lieu of throwaway, the filter static pressure loss is 0.35



## Electric Heat

### Standard Features

- » Galvanized steel casing
- » Flanged construction for direct unit mounting, in blow-thru configuration
- » Listed for zero clearance installation
- » Meets National Electrical Code requirements
- » Ni-Chrome wire in ceramic insulators
- » Stainless steel element terminals and hardware
- » Element support brackets on maximum 3 1/2" centers
- » Solid cover with continuous full height hinge
- » Overtemperature protection
- » All internal wiring rated for 105°C minimum
- » Airflow switch
- » Incoming line power distribution block
- » ETL Listed in compliance with UL/ANSI Standard 1995
- » Single point power connection
- » Heater factory mounted to unit with ETL listing as an assembly

### Optional Features

- » Door interlocking disconnect switch
- » Fusing (main) (per stage)
- » Magnetic contactors wired for disconnecting operation
- » Fan control package with heater interlock contacts (required for single point power connection)

| Heater AMP Calculation |             |
|------------------------|-------------|
| Voltage                | AMPs per kW |
| 115/1                  | 8.70        |
| 208/1                  | 4.81        |
| 230/1                  | 4.35        |
| 277/1                  | 3.61        |
| 208/3                  | 2.78        |
| 230/3                  | 2.51        |
| 460/3                  | 1.26        |
| 575/3                  | 1.00        |



### Electrical Calculations Information

1. Contact Superior Rex for MCA and/or MOP calculations
2. Non-Fused Door Interlock Disconnect Switch shall be sized according to MCA
3. Fused Door Interlock Disconnect Switch and Main Fusing shall be sized according to MOP

| Unit Voltage And Phase |     |      | Electric Heat KW Limits |      |      |      |      |      |      |      |      |      |      |      |
|------------------------|-----|------|-------------------------|------|------|------|------|------|------|------|------|------|------|------|
|                        |     |      | Unit Size               |      |      |      |      |      |      |      |      |      |      |      |
|                        |     |      | 08                      |      | 12   |      | 16   |      | 20   |      | 25   |      | 30   |      |
|                        |     | Min  | Max                     | Min  | Max  | Min  | Max  | Min  | Max  | Min  | Max  | Min  | Max  |      |
| Single Phase           | 115 | kW   | 3                       | 5    | 3    | 5    | 3    | 5    | 4    | 5    |      |      |      |      |
|                        |     | AMPs | 26.1                    | 43.5 | 26.1 | 43.5 | 26.1 | 43.5 | 34.8 | 43.5 |      |      |      |      |
|                        | 208 | kW   | 3                       | 9    | 3    | 9    | 3    | 9    | 4    | 9    | 6    | 9    | 6    | 9    |
|                        |     | AMPs | 14.4                    | 43.3 | 14.4 | 43.3 | 14.4 | 43.3 | 19.2 | 43.3 | 28.8 | 43.3 | 28.8 | 43.3 |
|                        | 230 | kW   | 3                       | 11   | 3    | 11   | 3    | 11   | 4    | 11   | 6    | 11   | 6    | 11   |
|                        |     | AMPs | 13.0                    | 47.8 | 13.0 | 47.8 | 13.0 | 47.8 | 17.4 | 47.8 | 26.1 | 47.8 | 26.1 | 47.8 |
|                        | 277 | kW   | 3                       | 13   | 3    | 13   | 3    | 13   | 4    | 13   | 6    | 13   | 6    | 13   |
|                        |     | AMPs | 10.8                    | 46.9 | 10.8 | 46.9 | 10.8 | 46.9 | 14.4 | 46.9 | 21.7 | 46.9 | 21.7 | 46.9 |
| Three Phase            | 208 | kW   | 3                       | 13   | 3    | 16   | 3    | 16   | 4    | 16   | 4    | 16   | 4    | 16   |
|                        |     | AMPs | 8.3                     | 36.1 | 8.3  | 44.4 | 8.3  | 44.4 | 11.1 | 44.4 | 11.1 | 44.4 | 11.1 | 44.4 |
|                        | 230 | kW   | 3                       | 13   | 3    | 18   | 3    | 18   | 4    | 18   | 4    | 18   | 4    | 18   |
|                        |     | AMPs | 7.5                     | 32.6 | 7.5  | 45.2 | 7.5  | 45.2 | 10.0 | 45.2 | 10.0 | 45.2 | 10.0 | 45.2 |
|                        | 460 | kW   | 3                       | 13   | 3    | 20   | 3    | 20   | 4    | 26   | 4    | 26   | 4    | 26   |
|                        |     | AMPs | 3.8                     | 16.3 | 3.8  | 25.1 | 3.8  | 25.1 | 5.0  | 32.6 | 5.0  | 32.6 | 5.0  | 32.6 |
|                        | 575 | kW   | 3                       | 13   | 3    | 20   | 3    | 20   | 4    | 26   | 4    | 26   | 4    | 26   |
|                        |     | AMPs | 3.0                     | 13.1 | 3.0  | 20.1 | 3.0  | 20.1 | 4.0  | 26.1 | 4.0  | 26.1 | 4.0  | 26.1 |

### Notes:

1. Electric heat sections may be shipped separate for field installation to unit
2. Factory certified submittals available upon request
3. Standard heater kW limits are maximum per unit size and voltage
4. Heater should be sized for a maximum leaving air temperature of 104°F



Performance Data

ELECTRIC DATA

MOTOR ELECTRICAL DATA

| Horsepower | Maximum Motor Amperage |       |       |       |       |       |       |       |
|------------|------------------------|-------|-------|-------|-------|-------|-------|-------|
|            | Voltage                |       |       |       |       |       |       |       |
|            | 115/1                  | 208/1 | 230/1 | 277/1 | 208/3 | 230/3 | 460/3 | 575/3 |
| 1/3        | 6.3                    | 3.5   | 3.2   | 2.6   | 1.7   | 1.5   | 0.8   | -     |
| 1/2        | 7.8                    | 4.3   | 3.9   | 3.6   | 2.2   | 2.1   | 1.1   | 0.9   |
| 3/4        | 10.6                   | 5.4   | 5.3   | 5.0   | 3.2   | 3.0   | 1.5   | 1.2   |
| 1          | 15.0                   | 8.3   | 7.5   | 5.5   | 4.0   | 3.6   | 1.8   | 1.4   |
| 1 1/2      | -                      | -     | -     | -     | 5.3   | 5.0   | 2.5   | 1.9   |
| 2          | -                      | -     | -     | -     | 7.0   | 6.4   | 3.2   | 2.5   |
| 3          | -                      | -     | -     | -     | 9.1   | 9.0   | 4.5   | 3.2   |

Notes:

- Actual motor nameplate AMPs may vary, but will not exceed values shown
- Consult Superior Rex for applications requiring special motors

UNIT WEIGHT DATA

| Component                 |             |          |          |          |          |           |           |
|---------------------------|-------------|----------|----------|----------|----------|-----------|-----------|
|                           |             | 08       | 12       | 16       | 20       | 25        | 30        |
| Base Unit                 |             | 125 [57] | 131 [60] | 160 [73] | 167 [76] | 231 [105] | 236 [107] |
| Damper Section            |             | 42 [19]  | 53 [24]  | 59 [27]  | 73 [33]  | 91 [41]   | 91 [41]   |
| Blow-thru Electric Heater |             | 42 [19]  | 42 [19]  | 42 [19]  | 50 [23]  | 55 [25]   | 55 [25]   |
| Discharge Coil Section    |             | 35 [16]  | 37 [17]  | 49 [22]  | 53 [24]  | 76 [35]   | 80 [36]   |
| Supply Plenum             |             | 22 [10]  | 26 [12]  | 35 [16]  | 38 [17]  | 76 [35]   | 76 [35]   |
| Return Plenum (SSL)       |             | 29 [13]  | 30 [14]  | 33 [15]  | 35 [16]  | 44 [20]   | 44 [20]   |
| Coil Rows                 | 1 Row - Dry | 12 [5]   | 14 [6]   | 17 [8]   | 21 [10]  | 23 [10]   | 27 [12]   |
|                           | 1 Row - Wet | 14 [6]   | 17 [8]   | 21 [10]  | 26 [12]  | 28 [13]   | 34 [15]   |
|                           | 2 Row - Dry | 17 [8]   | 21 [10]  | 26 [12]  | 32 [15]  | 37 [17]   | 43 [20]   |
|                           | 2 Row - Wet | 21 [10]  | 27 [12]  | 33 [15]  | 42 [19]  | 48 [22]   | 56 [25]   |
|                           | 4 Row - Dry | 29 [13]  | 36 [16]  | 45 [20]  | 57 [26]  | 65 [30]   | 76 [35]   |
|                           | 4 Row - Wet | 37 [17]  | 47 [21]  | 58 [26]  | 75 [34]  | 86 [39]   | 101 [46]  |
|                           | 6 Row - Dry | 40 [18]  | 51 [23]  | 64 [29]  | 81 [37]  | 93 [42]   | 109 [50]  |
|                           | 6 Row - Wet | 52 [24]  | 66 [30]  | 84 [38]  | 109 [50] | 124 [56]  | 146 [66]  |

Notes:

- Unit weight data is shipping weight in pounds [kilograms]
- Discharge section includes a 2 row coil

MOTOR/DRIVE WEIGHT DATA

| Type         | Motor HP |         |         |         |         |         |         |
|--------------|----------|---------|---------|---------|---------|---------|---------|
|              | 1/3      | 1/2     | 3/4     | 1       | 1 1/2   | 2       | 3       |
| Single Phase | 37 [17]  | 37 [17] | 45 [20] | 47 [21] | -       | -       | -       |
| Three Phase  | 34 [15]  | 34 [15] | 40 [18] | 43 [20] | 46 [21] | 53 [24] | 81 [37] |

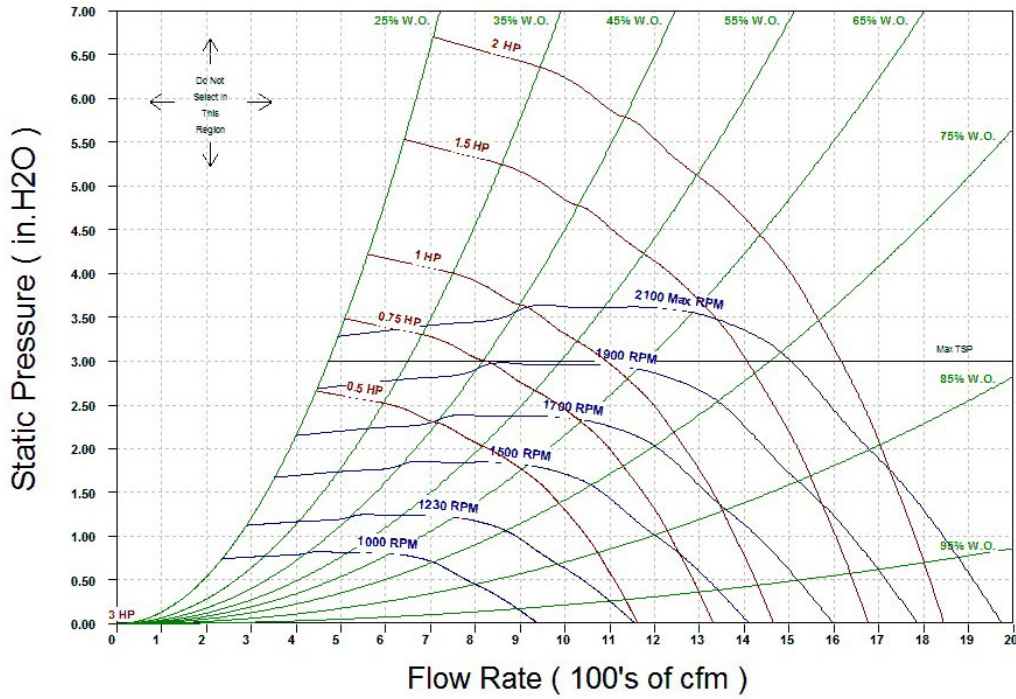
Notes:

- Includes motor, pulleys, belts, and motor base
- Motor/drive weight data is shipping weight in pounds [kilograms]

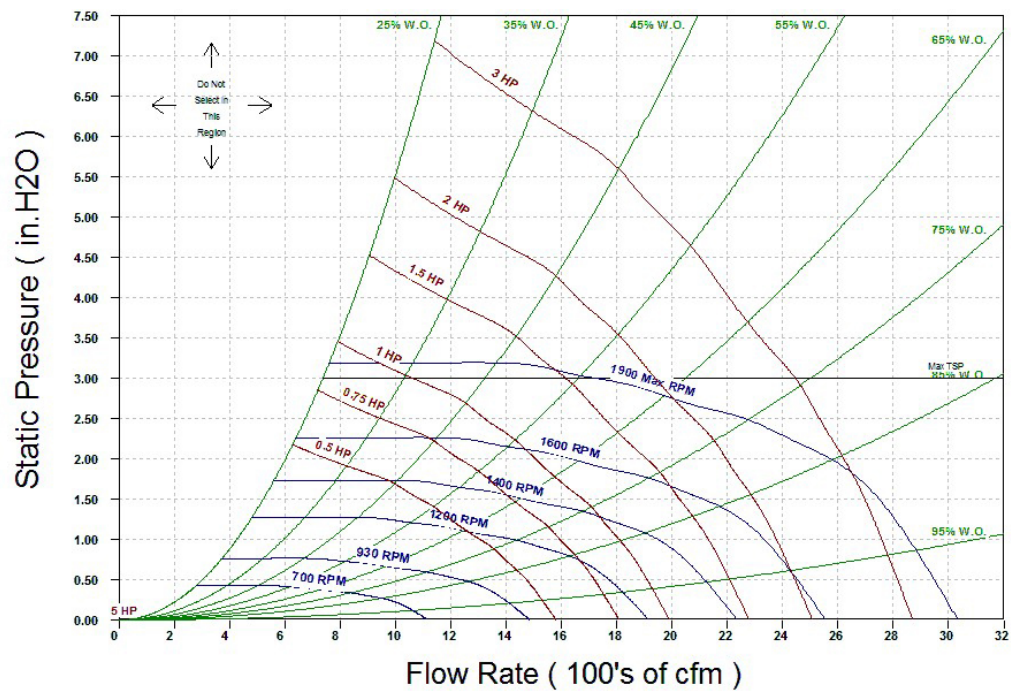


### Fan Performance Curves

UNIT SIZE 08 (FAN 0904R)

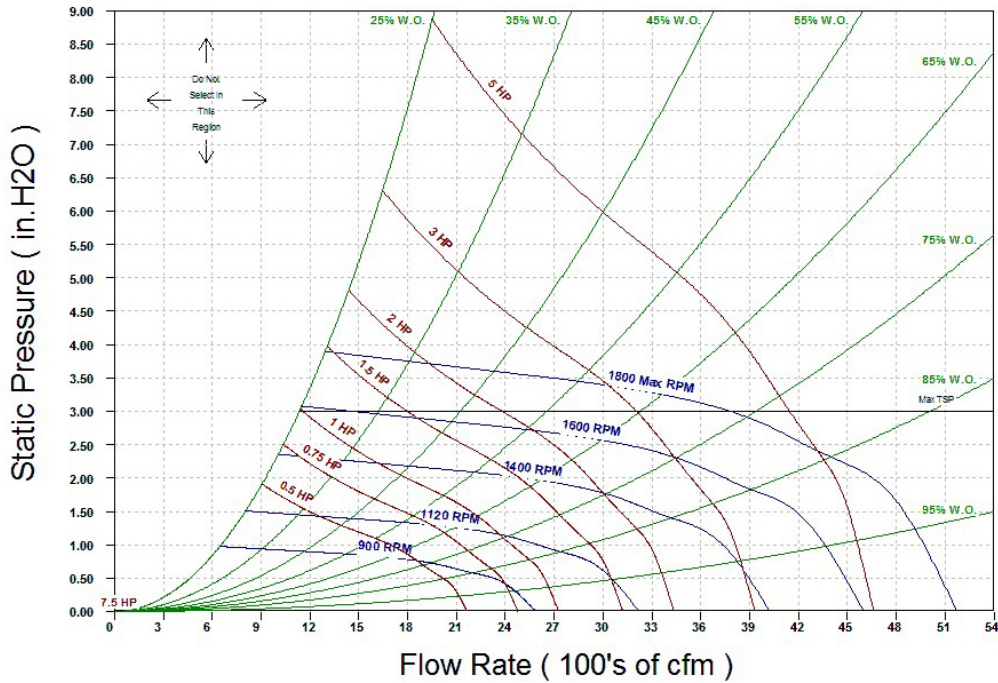


UNIT SIZE 12 (FAN 0906R)

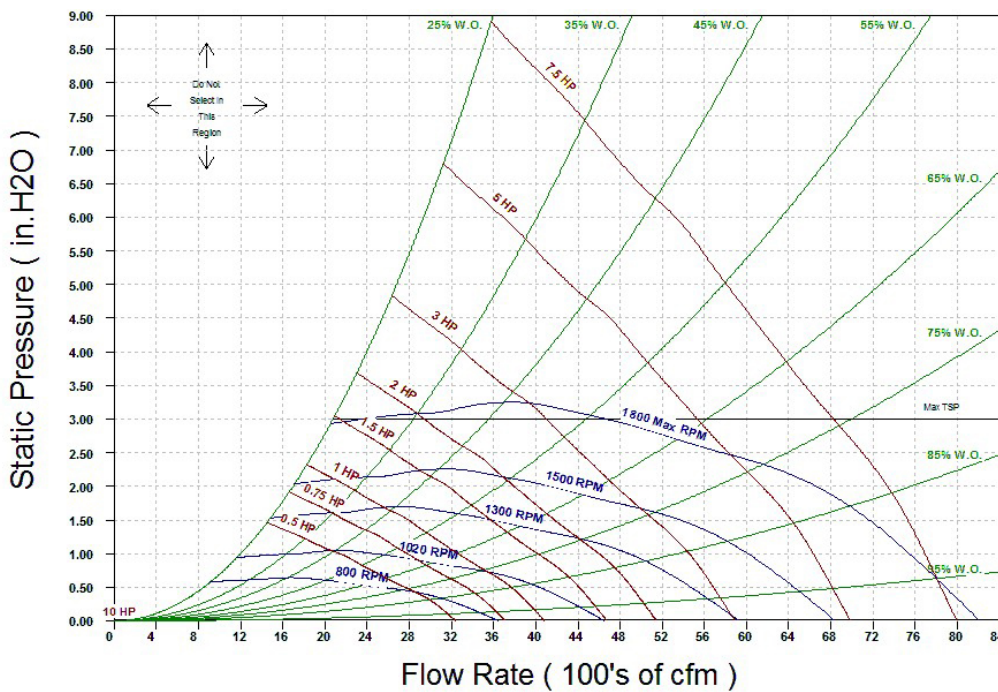


FAN CURVES

UNIT SIZE 16 (FAN 1008R)



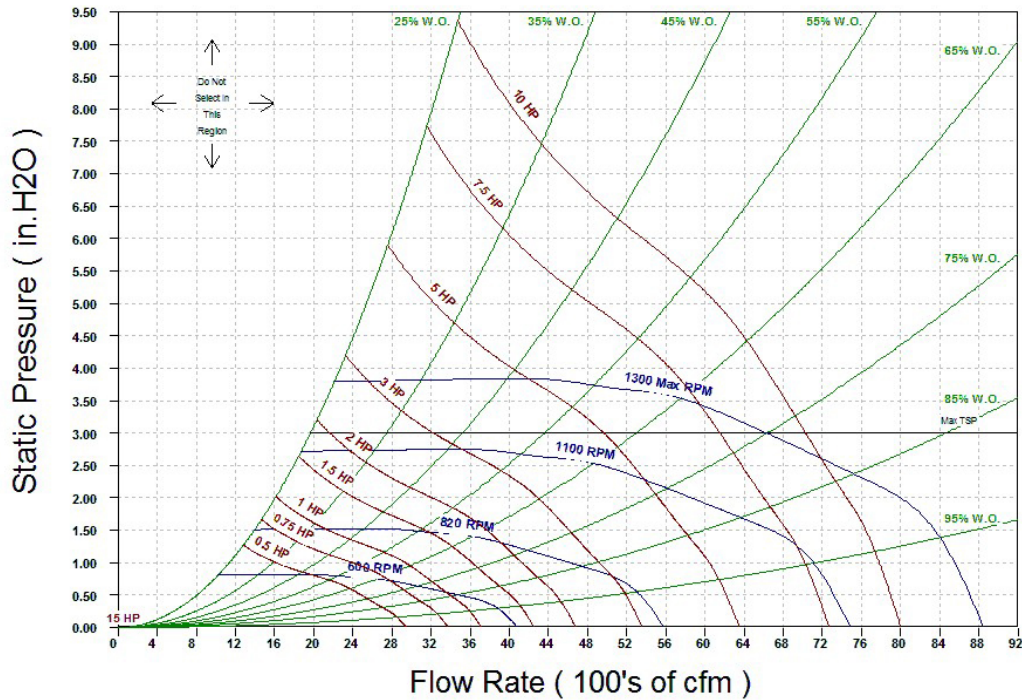
UNIT SIZE 20 (FAN 1010R)





FAN CURVES

UNIT SIZE 25 (FAN 1509R)



UNIT SIZE 30 (FAN 1511R)

